

# **INDIA: Tamil Nadu Empowerment and Poverty Reduction Project**

## **Addressing Disability among Rural Poor**

Varalakshmi Vemuru

Senior Social Development Specialist

World Bank

December 17, 2014

# Tamil Nadu State and Project context

- 72 million population, 2.8% with disability
- Industrialized state, second largest economy, progressive public sector
- Rural poverty characterized by agricultural labor, high inequality, low skills, weak access to credit and markets

## Project

- 26 districts, 120 blocks
- 4,174 villages (33% of state)
- 970,000 target households
- Total IDA: US\$ 274 million



# Project Development Objective

*To empower the poor and enhance their livelihoods* through:

- Development of community level institutions;
- Enhancement of skills and capacities of the poor (especially women, youth, differently-abled and the vulnerable); and
- Financing of demand-driven investments related to livelihoods for the target poor.

# Addressing Disability – Context

Limited progress in addressing disability due to:

- Poorly staffed public health institutions, indifferent provider attitudes and limited capacity for identification and certification
- Entrenched societal attitudes and stigma, economic and social exclusion of People with Disability (PwD)
- Low awareness among providers, communities, care givers and PwD themselves
- Poor rural outreach and physical inaccessibility of health facilities/services and financial barriers to treatment

# Addressing Disability – Mobilization

## Targeting

- Awareness generation on causes, signs and symptoms, treatment and rehabilitation
- Information dissemination on vulnerability of PwD irrespective of social and economic status, especially women and girls
- Participatory Identification of Poor for increasing sensitivity of caregivers and community, and identification of people with physical and mental disability

## Inclusion

- Membership in existing or special affinity groups to improve societal acceptance, exposure to treatment and rehabilitation options, and access to financial support
- Bridging the gap between PwDs, care givers and service providers
- Increasing access to existing public sector programs, informing and influencing their design and delivery

# Awareness Raising



# Cultural Teams



# Addressing Disability – Interventions

## Screening and certification

- Disability assessment camps with a team of Doctors organized by the project with support from Disability Resource Agencies
- Certification based on “Persons with Disability Act 1995” and “National Trust Act of 1999” – extent of 40% or more of specified disabilities as certified by a Recognized medical authority and issuance of Disability Identity Cards

## Support

- Referrals to public, private and NGO sector hospitals for corrective surgeries, aids and appliances, treatment and rehabilitation
- Individual assistance for consumption, medical needs, and livelihood activities.
- Initiatives for skill training, employment opportunities, and productive economic activities



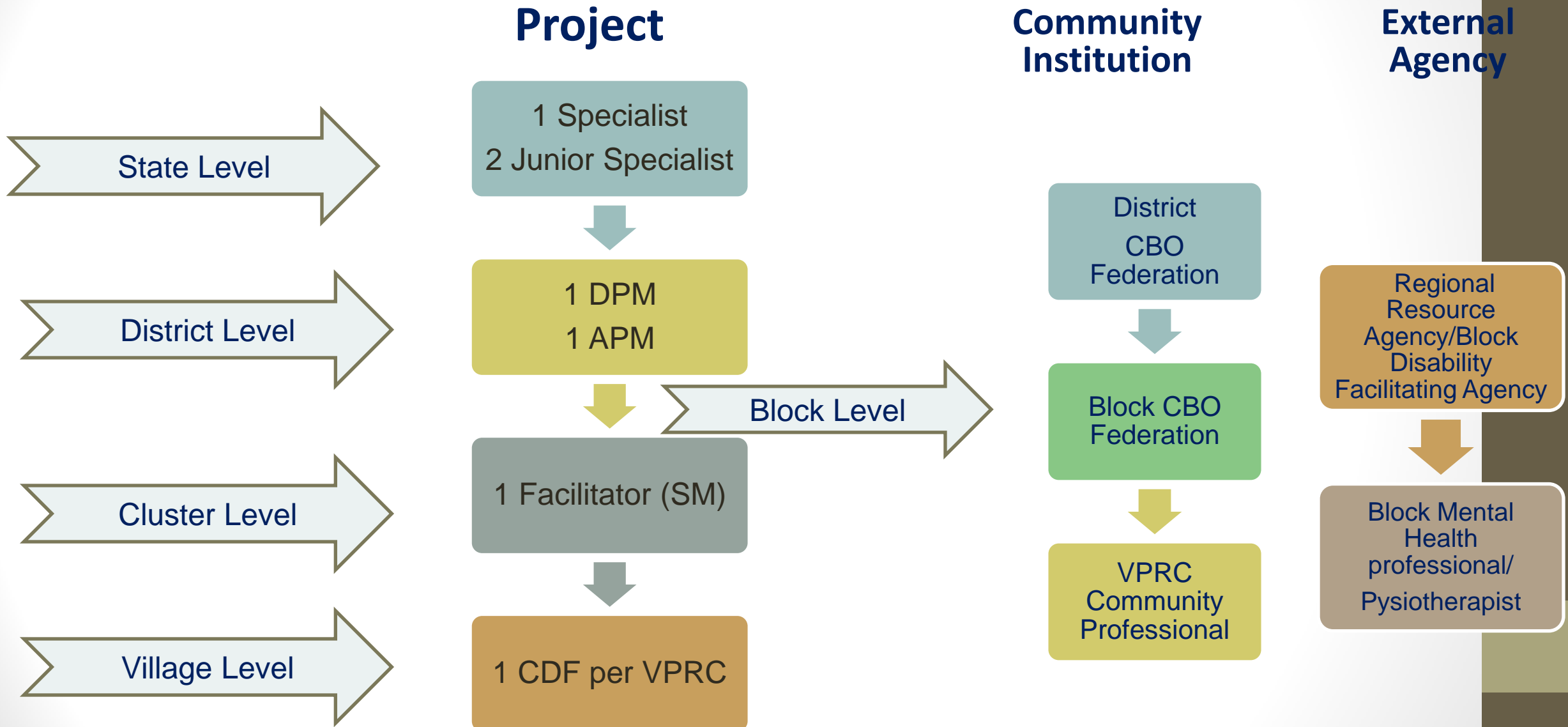
# Medical Camp



19/06/2014

Organisation	Nature of Service extended	Outcome
Primary Education	Technical and handholding support to integrate differently abled children into schools.	<ul style="list-style-type: none"> <li>• School Inclusion</li> <li>• Special educational services in Day Care Center</li> <li>• Aids and appliances</li> <li>• Teaching learning materials</li> </ul>
District Differently abled Rehabilitation Office	The special rehabilitation programs implemented by the State and Central Government pertaining to differently abled persons.	<ul style="list-style-type: none"> <li>• Nationalized disability ID cards</li> <li>• Maintenance Grants for severely disabled person</li> <li>• Educational assistances</li> <li>• Aids and Appliance</li> <li>• Social security measures - travelling concession, marriage assistance</li> </ul>
District Rural Development Agency	3 % reservation in all poverty alleviation programs implemented by the department such as giving revolving fund to credit rated SHGs and financial assistance to initiate livelihood activities.	<ul style="list-style-type: none"> <li>• Jobs fairs</li> <li>• NREGA Job Cards</li> <li>• Subsidiary funds allocation for developmental programs</li> <li>• Health insurance</li> </ul>
TAHDCO	3 % fund allocation to SC differently abled persons availing livelihood assistance and revolving fund for the groups.	<ul style="list-style-type: none"> <li>• Housing allocation.</li> <li>• Skill training and livelihood programs.</li> <li>• Subsidiary loan for developmental activities</li> </ul>
National Trust	Central Government program being implemented for the welfare of Severe disabled persons.	<ul style="list-style-type: none"> <li>• Guardianship certificate</li> <li>• Nirmaya Health Insurance scheme</li> </ul>
Service providing organizations	Skills training, rehabilitation supports such as medical, education etc.	<ul style="list-style-type: none"> <li>• Ensuring appropriate entitlements and assistances as needed</li> </ul>

# Implementation Arrangements



# Addressing Disability - Achievements

- Community level disability professionals for ongoing support - **3,974**
- Identification of differently abled persons - **159,453**
- Issuance of Disability ID cards - **148,402**
- Social Safety Nets
  - **47,441** Physical handicap Pensions
  - **15,849** Maintenance Grants
  - **71,936** MNREGA job cards
  - **75,846** Old Age pensions
  - **42,440** Aids and Appliances
- Inclusion into CBOs – **13,285 Special groups**
- Linkages to Financial Institutions – **9,001 Special groups**
- Individual financial assistance to **1,01,910 PwDs**

# PHRD Mental Disability Project

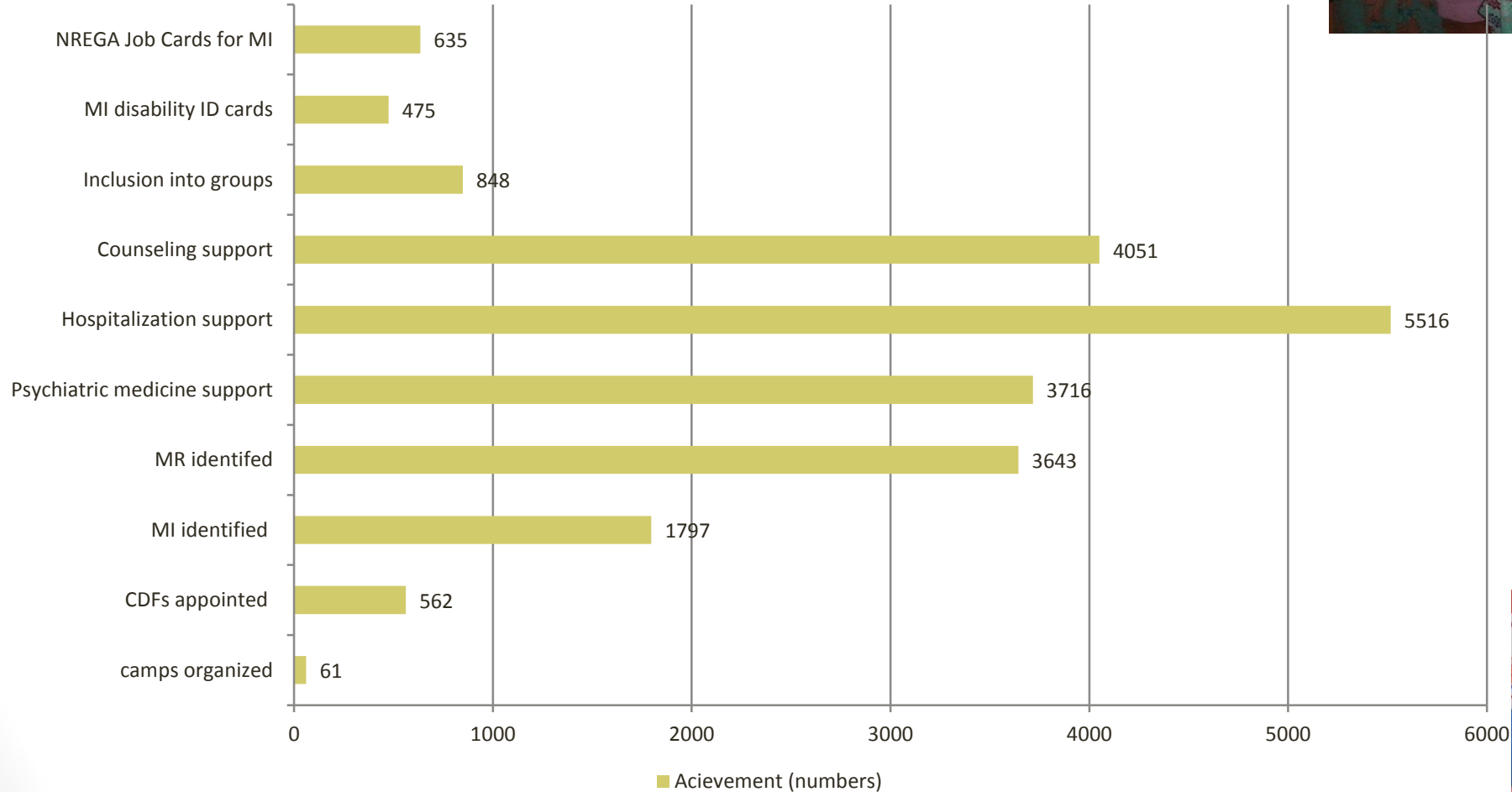
**Development Objective** - “To improve the participation of persons with mental disability in community activities including access to livelihoods”

## Key features

- Exclusive focus on persons with mental disabilities including mental illness and intellectual disability building on TNEPRP’s successful disability strategy
- Implementation in 578 Village Panchayat of 15 Blocks in 15 Phase-I districts in 44 clusters harnessing the trust and confidence in community institutions.
- Partnership with reputable Regional Resource Agencies (RRAs) and Block level Mental Health professionals (BMHPs) for Technical
- Creating and demonstrating community support system for subsequent follow up, convergence and linkages



# Progress



# Addressing Disability - Challenges

- Expanding project outreach to the more reticent families with counseling and confidence building
- Facilitating shared understanding - sensitivity, empathy- among families and communities for recovery and rehabilitation
- Integrating Primary Health Centre functioning with the project to ensure early detection, prevention and management.
- Livelihoods support, Vocational skills and Rehabilitation Services
- Partnerships with public, private and Voluntary sectors for access to psychiatric drugs, health services, entitlements, livelihoods, legal support, long term care
- Proofing families against shock and risk to disability incidence and secondary mental health issues

# Thank You!!!

