



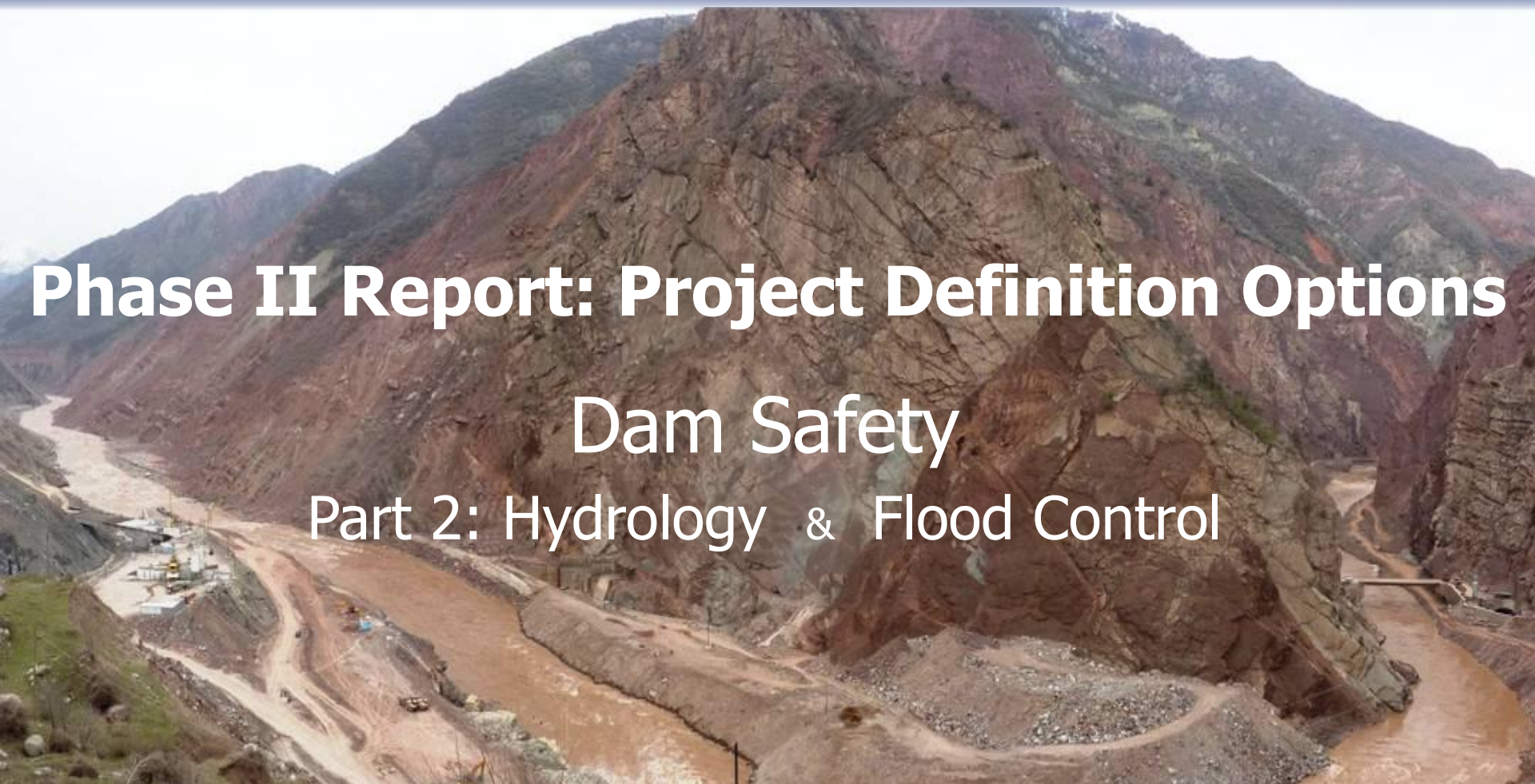
# TECHNO-ECONOMIC ASSESSMENT STUDY FOR ROGUN HYDROELECTRIC CONSTRUCTION PROJECT

OSHPC BARKI TOJIK

## Phase II Report: Project Definition Options

### Dam Safety

#### Part 2: Hydrology & Flood Control



# Review of HPI's Design





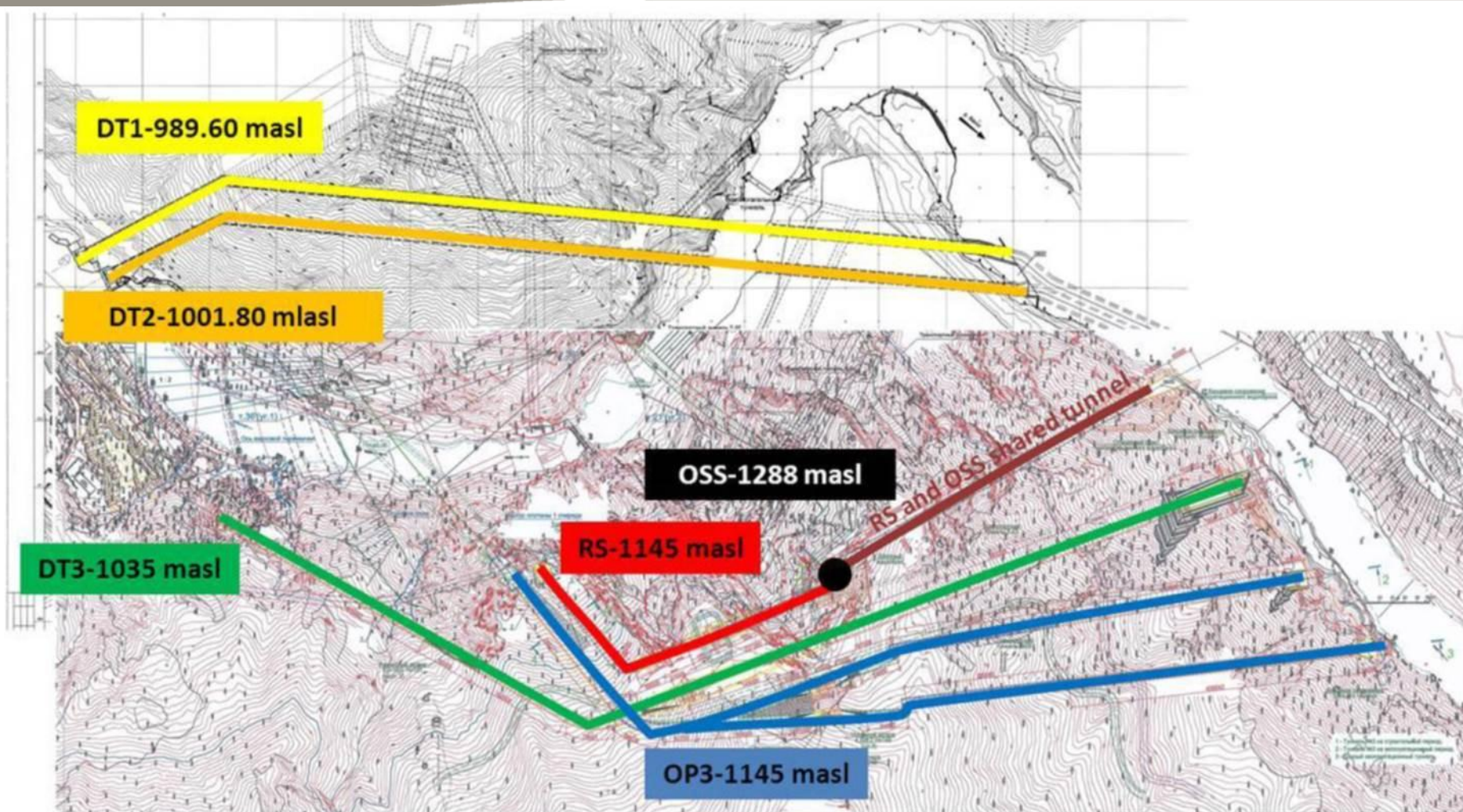
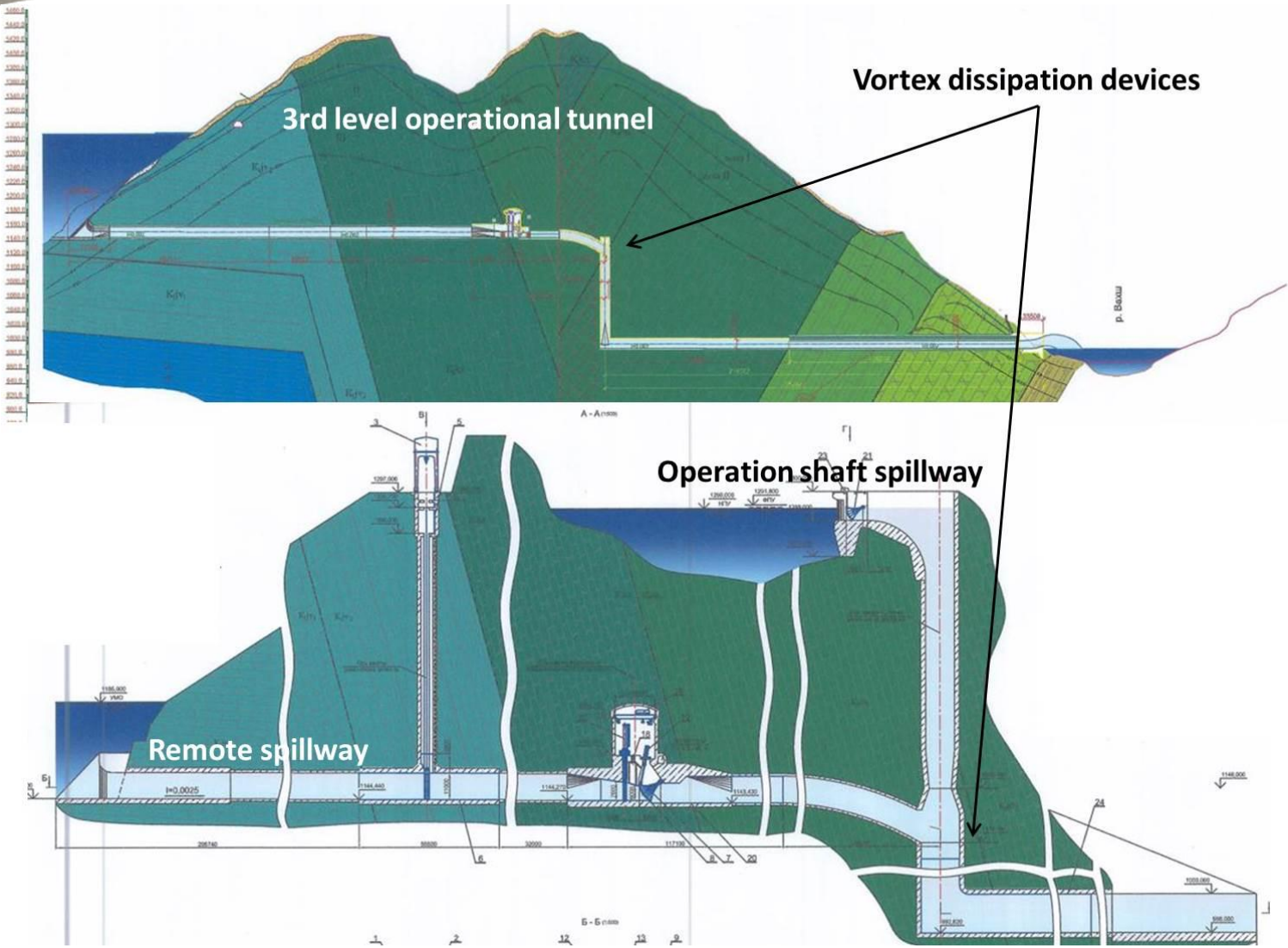
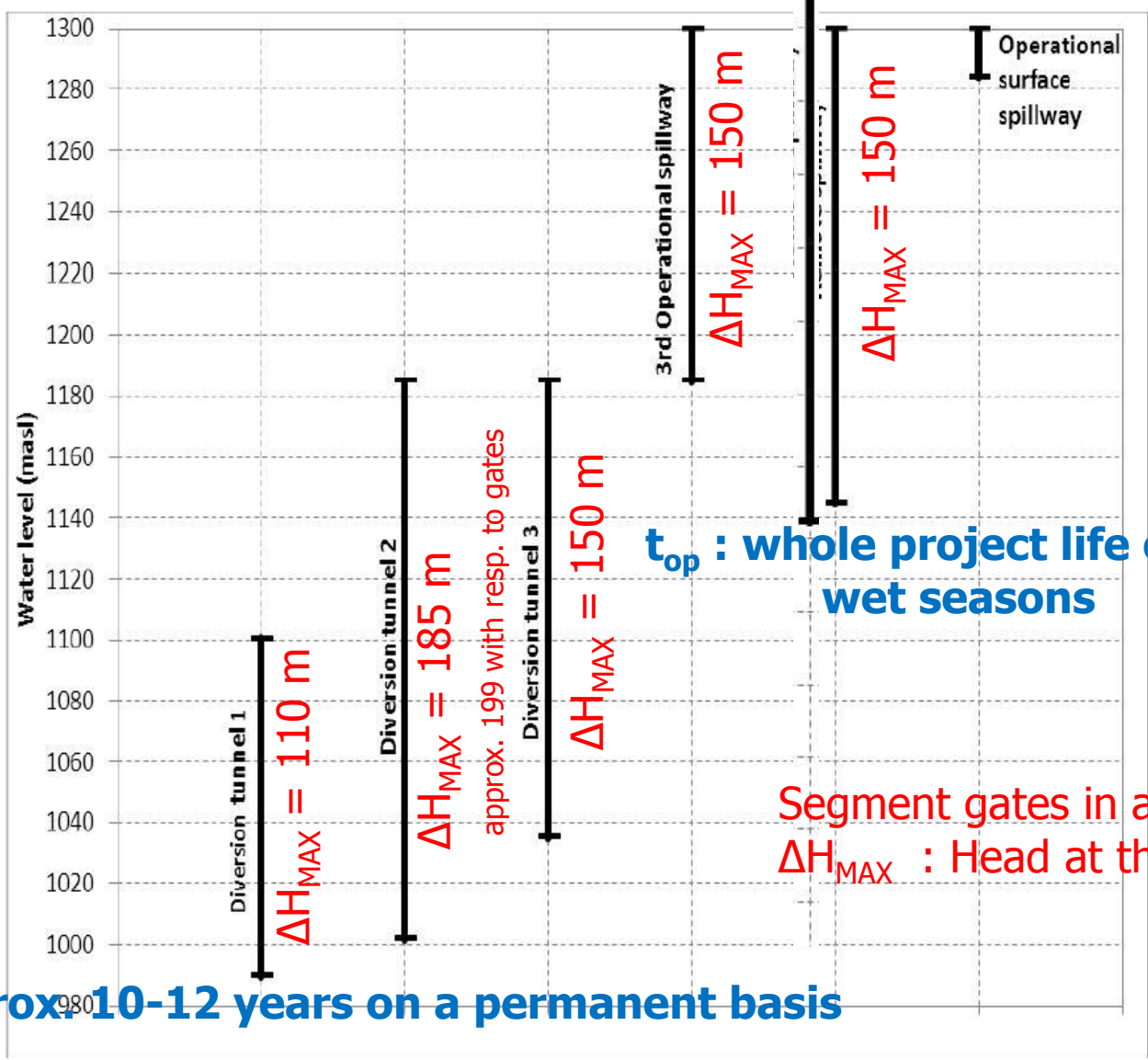


Figure 3.1 : Plan view - Diversion and spillway structures – HPI scheme









$t_{op}$  : whole project life only during wet seasons

$t_{op}$  : approx. 10-12 years on a permanent basis

Segment gates in all cases  
 $\Delta H_{MAX}$  : Head at the intake

Figure 3.3 : Operation range of discharge tunnel - HPI

## Conclusion:

According to the Consultant criteria, several items appear not to be fully safe:

- The level of protection of the cofferdam is not sufficient.
- The waterhead that all structures (temporary or final) have to support is too high.
- The Ionaksh fault is not mentioned and no remedial measures are proposed to cope with its displacements whereas there is a significant construction period of high dependence on DT3.
- Only two independent structures.
- Vortex dissipation devices have not been tested at this scale.
- There is no provision against GLOFs.
- Impact of sedimentation not taken into account.



# Proposed TEAS Design



VAKHSH River at the ROGUN H.P.P.

## Flood Probability

TMR (yr)	Peak Discharge ( daily; m <sup>3</sup> /s )		
	Lower*	Calc.	Upper*
2	2 200	<b>2 300</b>	2 300
5	2 600	<b>2 700</b>	2 800
10	2 900	<b>3 000</b>	3 100
20	3 100	<b>3 300</b>	3 400
50	3 400	<b>3 600</b>	3 800
100	3 700	<b>3 900</b>	4 100
200	3 900	<b>4 200</b>	4 400
500	4 200	<b>4 500</b>	4 800
1 000	4 500	<b>4 800</b>	5 100
2 000	4 700	<b>5 100</b>	5 400
5 000	5 000	<b>5 400</b>	5 800
10 000	5 300	<b>5 700</b>	6 100
<b>PMF</b>	<b>6 100</b>	<b>7 000</b>	<b>7 800</b>

\* : Conf. Interval of 95% (99%)





The probability of occurrence of a phenomenon with a mean period of return "TMR" within a certain period of time "TE" (time of exposure) can be evaluated with the formula:

$$P_{occ} = \left(1 - \left(1 - \frac{1}{TMR}\right)^{TE}\right)$$

When  $TE \ll TMR$  the value of the probability of occurrence is close to the same ratio  $TE/TMR$  and is expressed as "one in N" or "one out of N cases".

The design flood for each stage of the dam construction is selected on this basis:

1. an acceptable probability of occurrence is adopted,
2. period of exposure of each stage of construction is evaluated,
3. the resulting period of return of the flood is deduced,
4. the upper bound (97,5% confidence) of the peak discharge having that period of return is adopted,
5. evacuating facilities (tunnels, spillways, etc.) are checked or re-designed to provide the required level of safety.

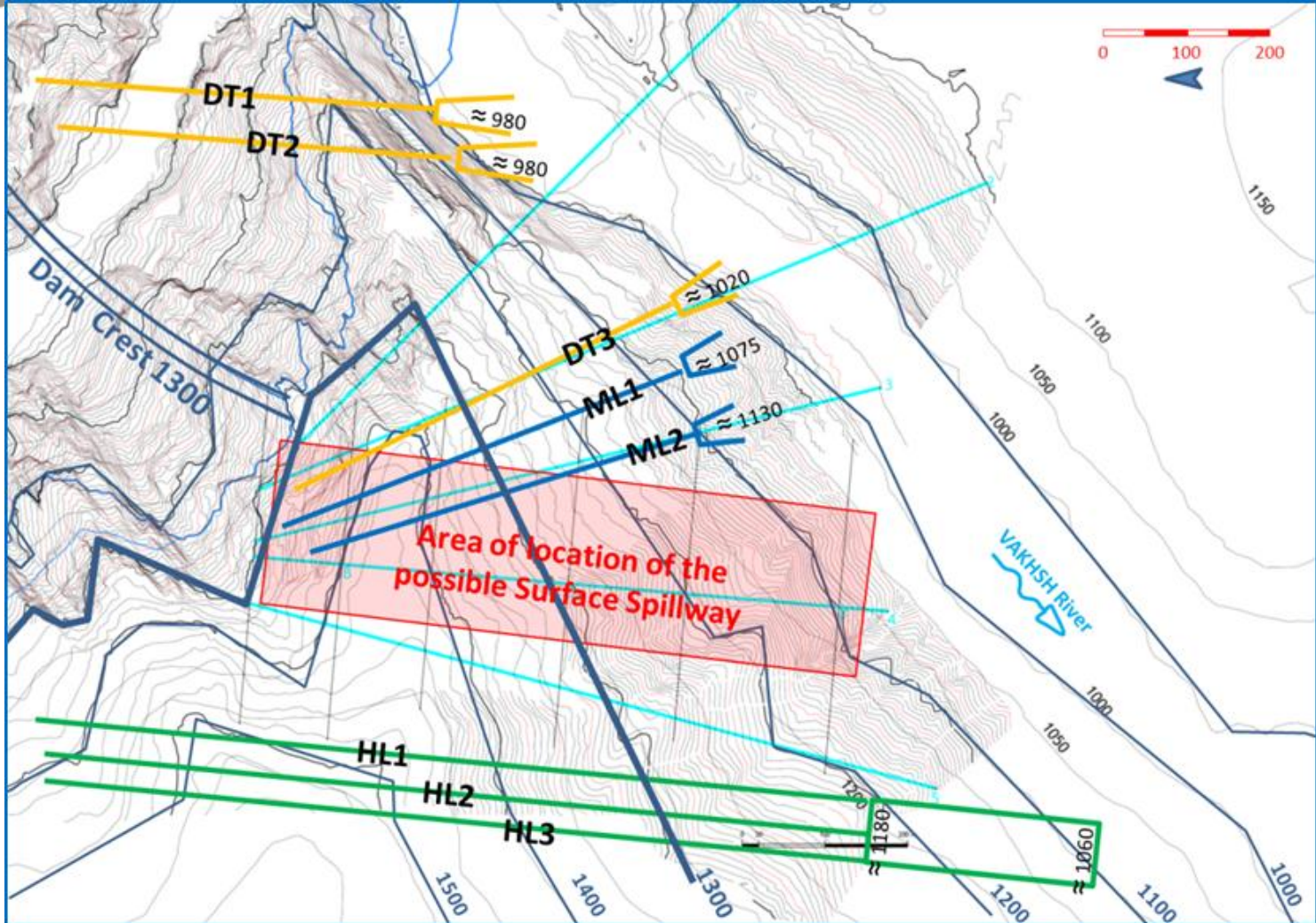
Values of processes 1 through 4 are given in the next table.



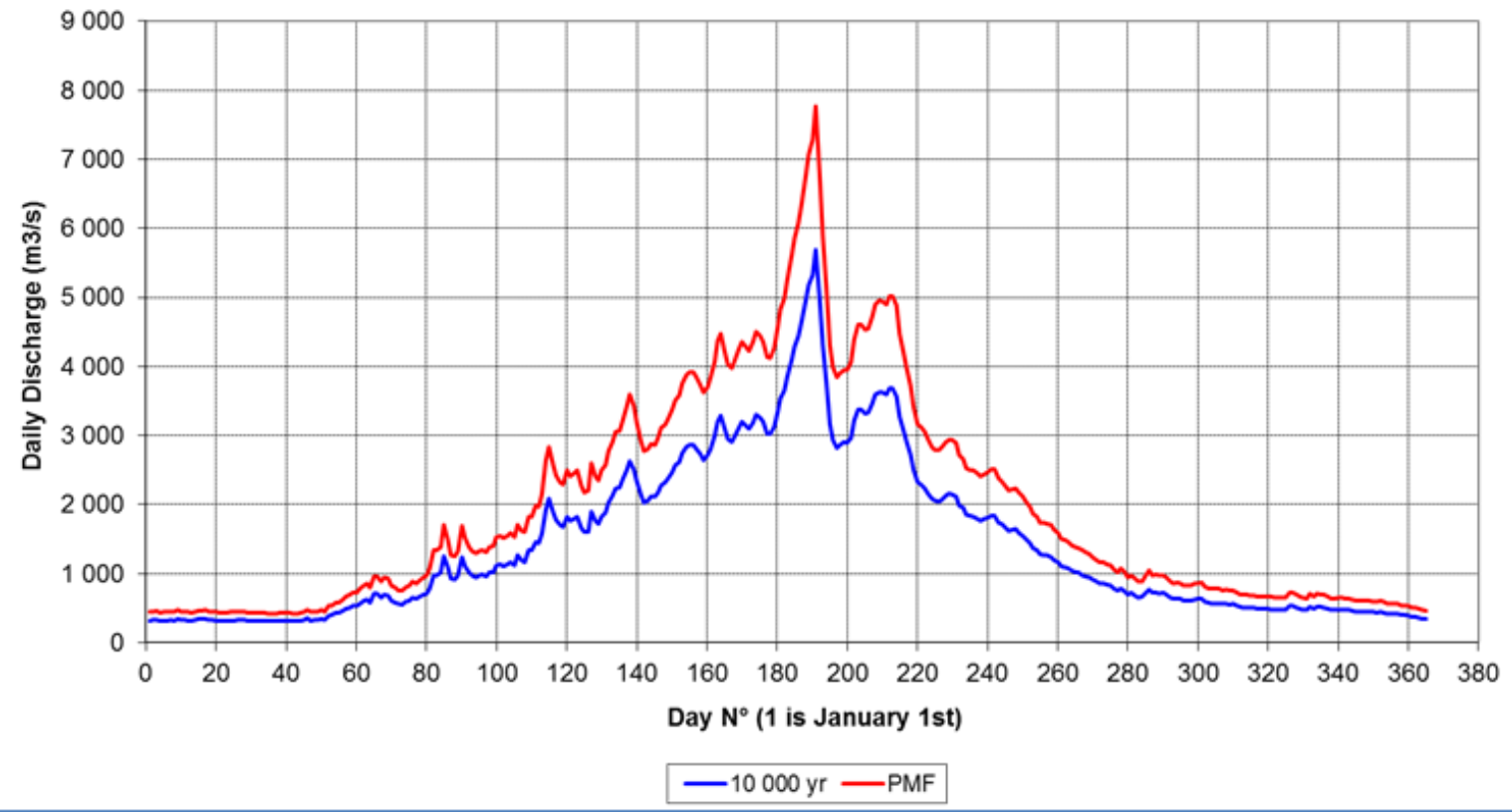
## Design criteria:

- Tunnels should not operate under heads higher than 120 m. This condition limits forces on gates and flow velocity to acceptable values. Exception is made for extraordinary (rare and short lasting) opportunities when heads up to 150 m are tolerated. Case of difficult operation during and after earthquakes, etc.
- For each construction stage at least two independent evacuating organs (i.e. tunnels) are required.
- For high reservoir levels flood routing effects (peak attenuation) are taken into account.
- No discharge through the turbines is taken into consideration during flood peaks.



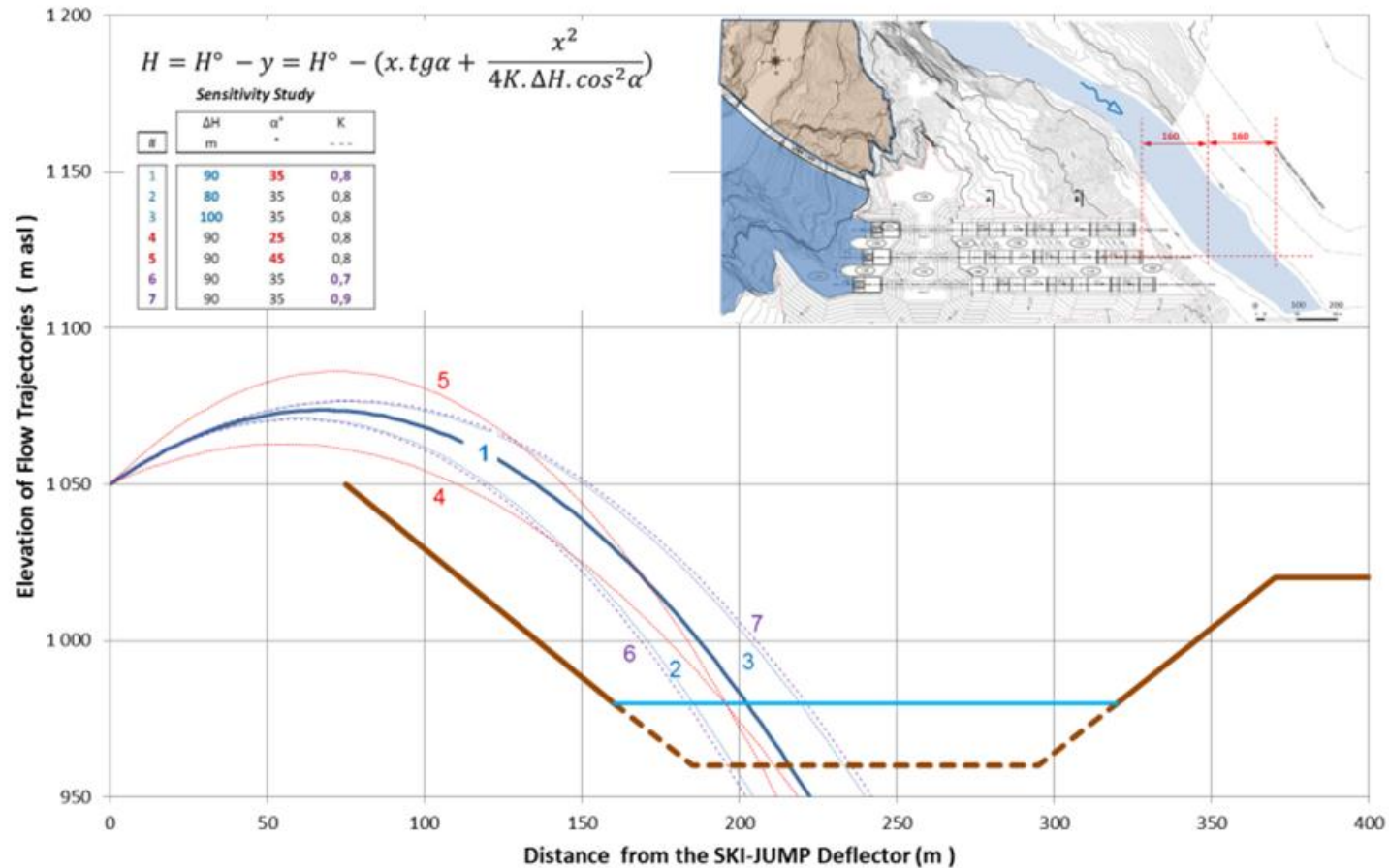


**Hydrographs for 10 000-yr Flood and Probable Maximum Flood**





### Stepped Spillway - Ski Jump Trajectories



## 5. CONCLUSIONS AND RECOMMENDATIONS

The feasibility of a surface spillway has been proven for each one of the three dam height alternatives, having a discharge capacity equal to the peak of the Probable Maximum Flood, to be implemented in the long term on the right bank of the reservoir, close to the dam.

This surface spillway is to replace the other flood evacuating organs once when the sediments in the reservoir make them useless or reduces their discharge capacities.



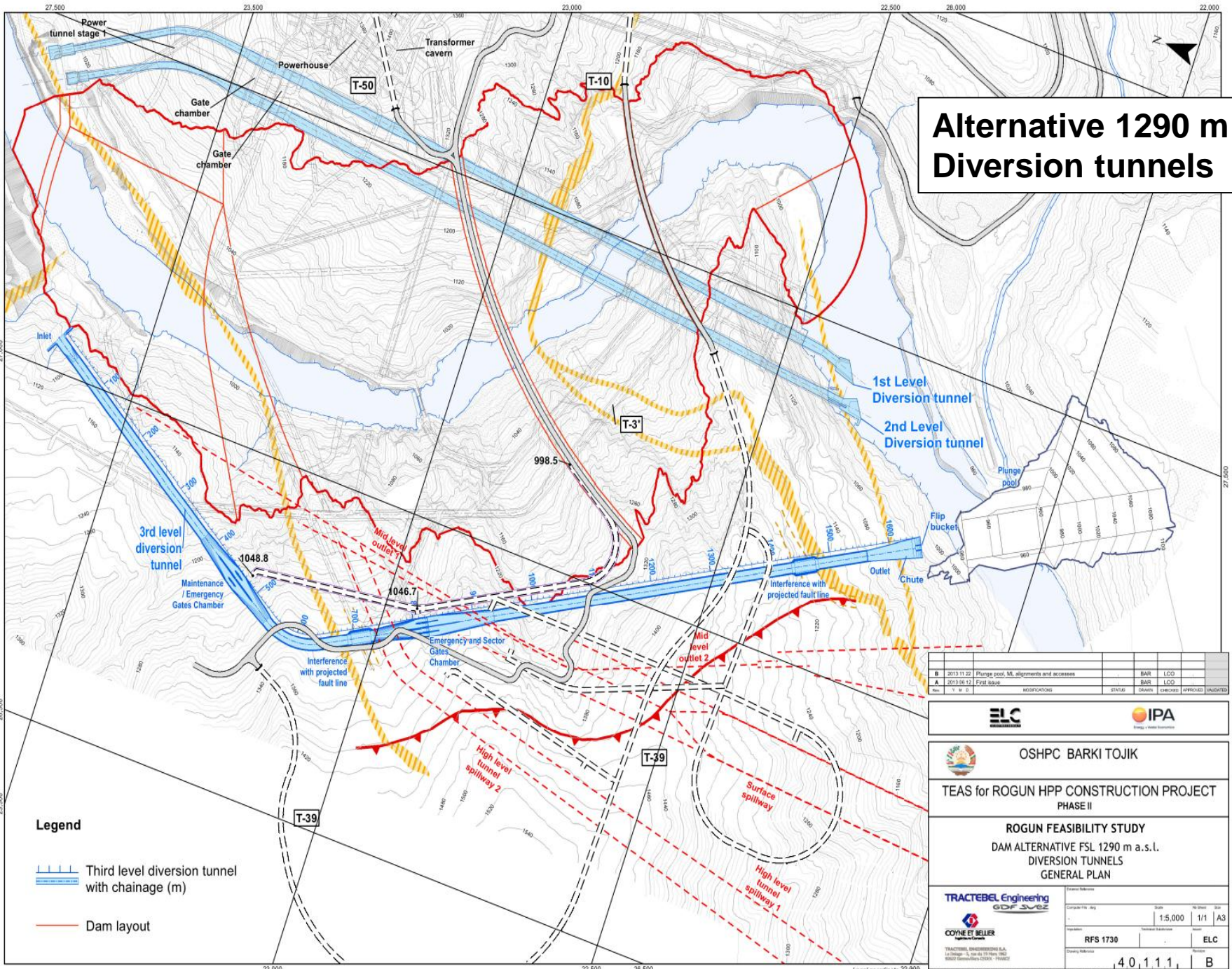
... main components are described ....

All these components have been designed and dimensioned on the basis of the state of the art and have been determined to be feasible. Model tests are recommended for design optimization.





# Alternative 1290 m asl Diversion tunnels



- Legend**
- Third level diversion tunnel with chainage (m)
  - Dam layout

2013.11.22	Plunge pool, ML alignments and accesses	BAR	LCO		
2013.08.12	Final Issue	BAR	LCO		
Rev.	Y. B. D.	MODIFICATIONS	STATUS	OWNER	APPROVED



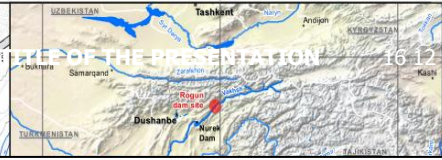
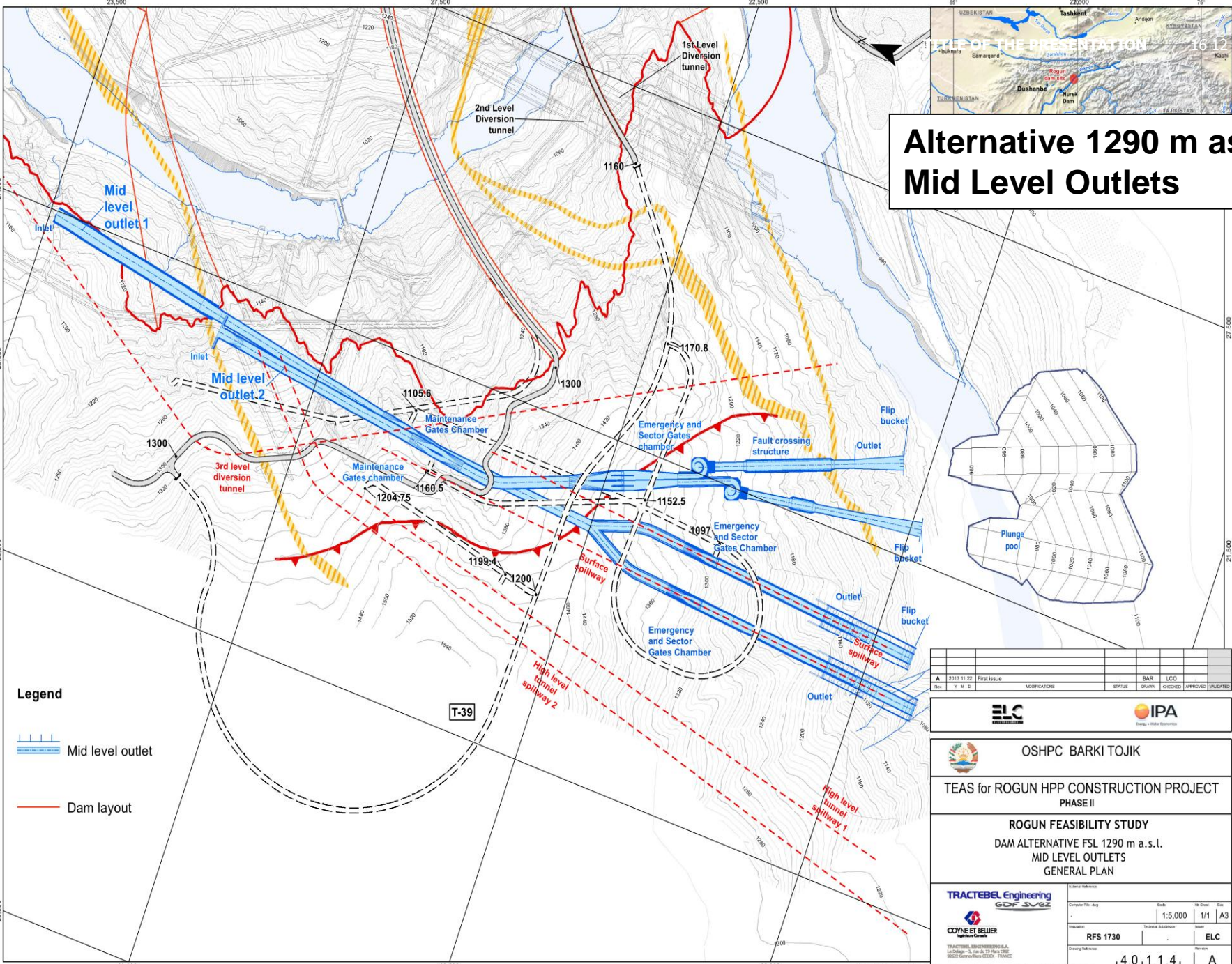
OSHPC BARKI TOJIK  
TEAS for ROGUN HPP CONSTRUCTION PROJECT  
PHASE II

ROGUN FEASIBILITY STUDY  
DAM ALTERNATIVE FSL 1290 m a.s.l.  
DIVERSION TUNNELS  
GENERAL PLAN

TRACTEBEL Engineering		Scale		No. sheet		Date	
COYNE ET BELLER		1:5,000		1/1		A3	
PROJECT		RFS 1730		DRAWN		ELC	
DATE		4.0.11.1		REVISION		B	



# Alternative 1290 m asl Mid Level Outlets



- Legend**
- Mid level outlet
  - Dam layout

A	2013 11 22	First Issue					BAR	LCG		
			MODIFICATIONS				DRAWN	CHECKED	APPROVED	VALIDATED
			Y	M	D					



**OSHPC BARKI TOJIK**

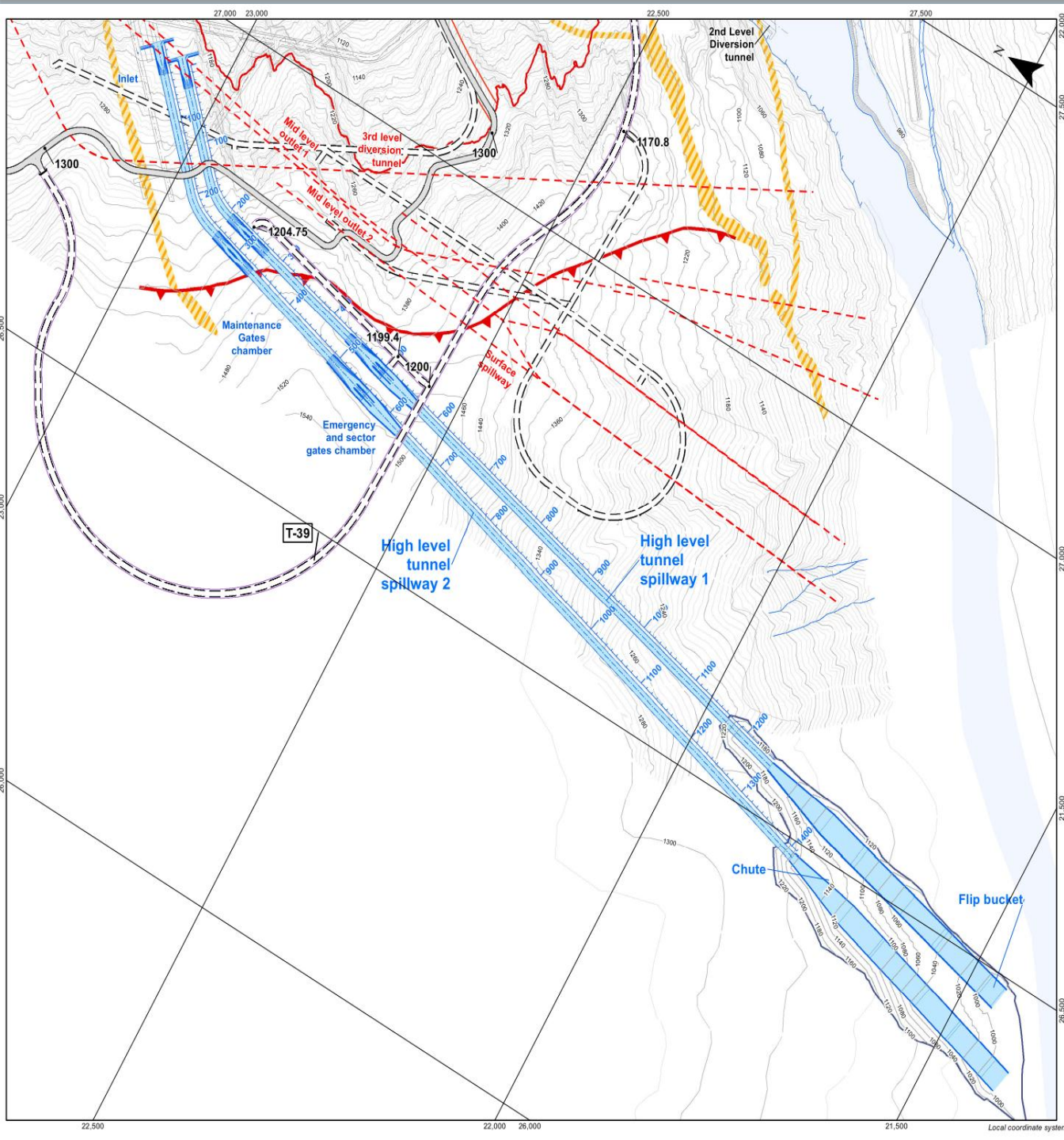
TEAS for ROGUN HPP CONSTRUCTION PROJECT  
PHASE II

ROGUN FEASIBILITY STUDY  
DAM ALTERNATIVE FSL 1290 m a.s.l.  
MID LEVEL OUTLETS  
GENERAL PLAN

External Reference		Scale	No. Sheet	Doc.
Compiled File	Rev	1:5,000	1/1	A3
Project	Technical Subdivision	Issue		
RFS 1730			ELC	
Drawing Reference		4,0,1,1,4, A		







# Alternative 1290 m asl High Level Tunnels

## Legend

- High level tunnel spillway with chainage (m)
- Dam layout

B	2013.11.22	ML alignments and accesses	BAR	LCO		
A	2013.08.12	Final issue	BAR	LCO		
Rev	Y	M	D	MODIFICATIONS	STATUS	DESIGN
					CHECKED	APPROVED
					VALIDATED	



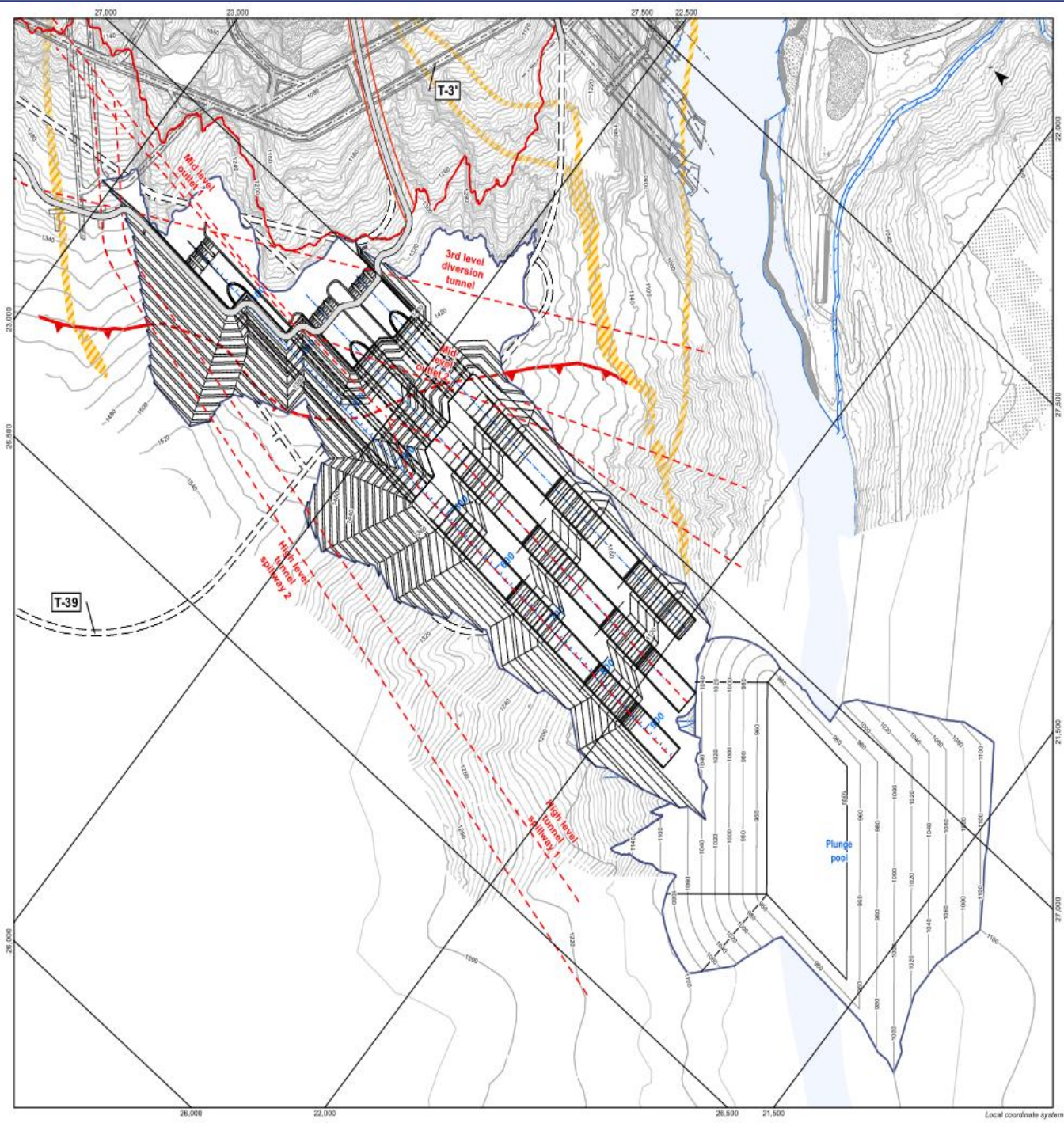
**OSHPC BARKI TOJK**  
 TEAS for ROGUN HPP CONSTRUCTION PROJECT  
 PHASE II

**ROGUN FEASIBILITY STUDY**  
 DAM ALTERNATIVE FSL 1290 m a.s.l.  
 HIGH LEVEL TUNNEL SPILLWAYS  
 GENERAL PLAN

  <small>TRACTEBEL ENGINEERING S.A.          La Chaux-de-Fonds, Switzerland          COYNE ET BELIER S.A.          1000 Geneva, Switzerland</small>	External Reference RFS 1730	Scale 1:5,000	No. Sheet 1/1	Size A3
	Drawing Reference 40,113, B			



# Alternative 1290 m asl Surface Spillway



# Thank you !



COYNE ET BELLIER  
Ingénieurs Conseils



TECHNO-ECONOMIC ASSESSMENT STUDY  
FOR ROGUN HYDROELECTRIC CONSTRUCTION PROJECT