

**Levels and Determinants of Hunger
Poverty in Urban India During the 1990s**

Anil B. Deolalikar

University of California, Riverside

and

Amaresh Dubey

North-Eastern Hill University, Shillong

Objectives

- To calculate poverty incidence in urban sector in India during 1990s
- To calculate incidence of hunger poverty in urban sector in India during 1990s
- To identify correlates of income poverty and hunger poverty

Urban Poverty and Nutrition: A Review

- Conceptualization of urban poverty
 - Indian urban poverty norm
 - Based on food energy intake
 - All Indian average intake 2095 Kcal derived in 1979
 - In money terms INR56.64 at 1973-74 prices per person per day (exp)

Urban Poverty and Nutrition: A Review (Conted.)

- Exiting studies
 - Poverty estimates at aggregate levels
 - Disaggregation by geographical areas
 - State/regions within larger states
 - Other studies
 - Mostly in large cities
 - Proportion of population living in slums
 - City size and poverty

Urban Poverty and Nutrition: A Review (Conted.)

- Limitations of existing poverty estimates
 - Fixed norm since 1979
 - Food energy requirement varies with population structure (age and sex) and employment structure
 - Problems with adjustment for price changes
 - Under representation of smaller towns
 - Same norm for all towns and cities

Our hypotheses

- Factor productivity varies with city size
- Implication on poverty and nutrition
 - Age and employment structure could be different across towns and cities of varying sizes
 - Same norm could not be representative
 - Possibility of getting biased estimate

Our approach

- Divide cities and towns into size classes
 - S1 population 5000 to 50,000
 - S2 population 50,000 to 200, 000
 - S3 population 200, 000 to a million
 - S4 population one million and above
- Recalculate normative calorie requirement
- Then calculate consumption poverty and hunger poverty by city size

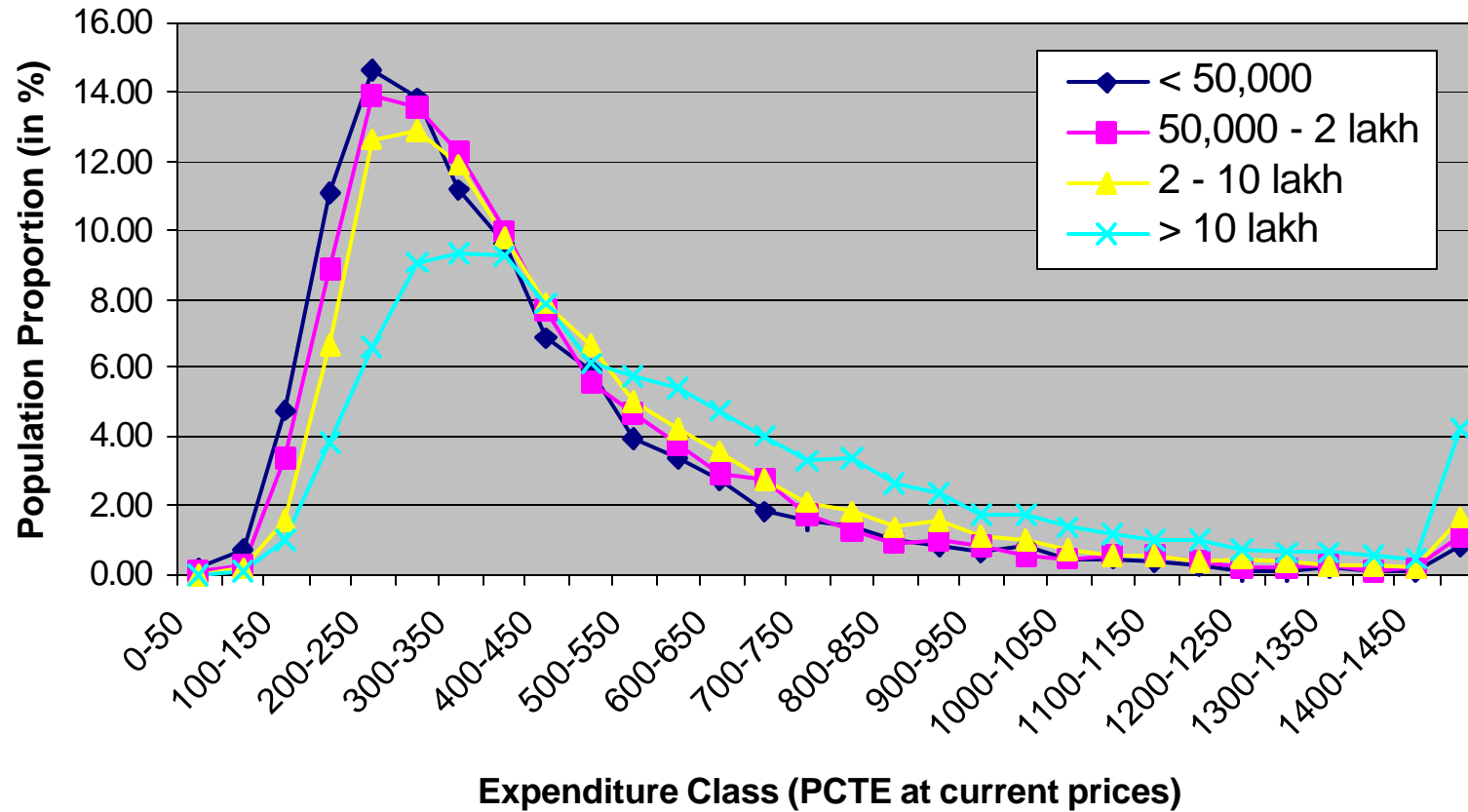
Differences in expenditure distribution and labour earnings

Average Per Capita Total Expenditure at (1993-94) prices					
	S1	S2	S3	S4	Total
1993-94	391.11	422.7	467.99	606.28	459.89
1999-2000	433.23	490.8	540.66	660.03	528.06
Growth (%)	10.77	16.11	15.53	8.87	14.82
Average real weekly wages (at 1993-94 prices) for casual workers					
	S1	S2	S3	S4	Total
1993-94	193.91	180.09	214.34	247.32	210.08
1999-2000	296.83	328.7	376.17	422.01	353.24
Growth (%)	53.08	82.52	75.5	70.63	68.15

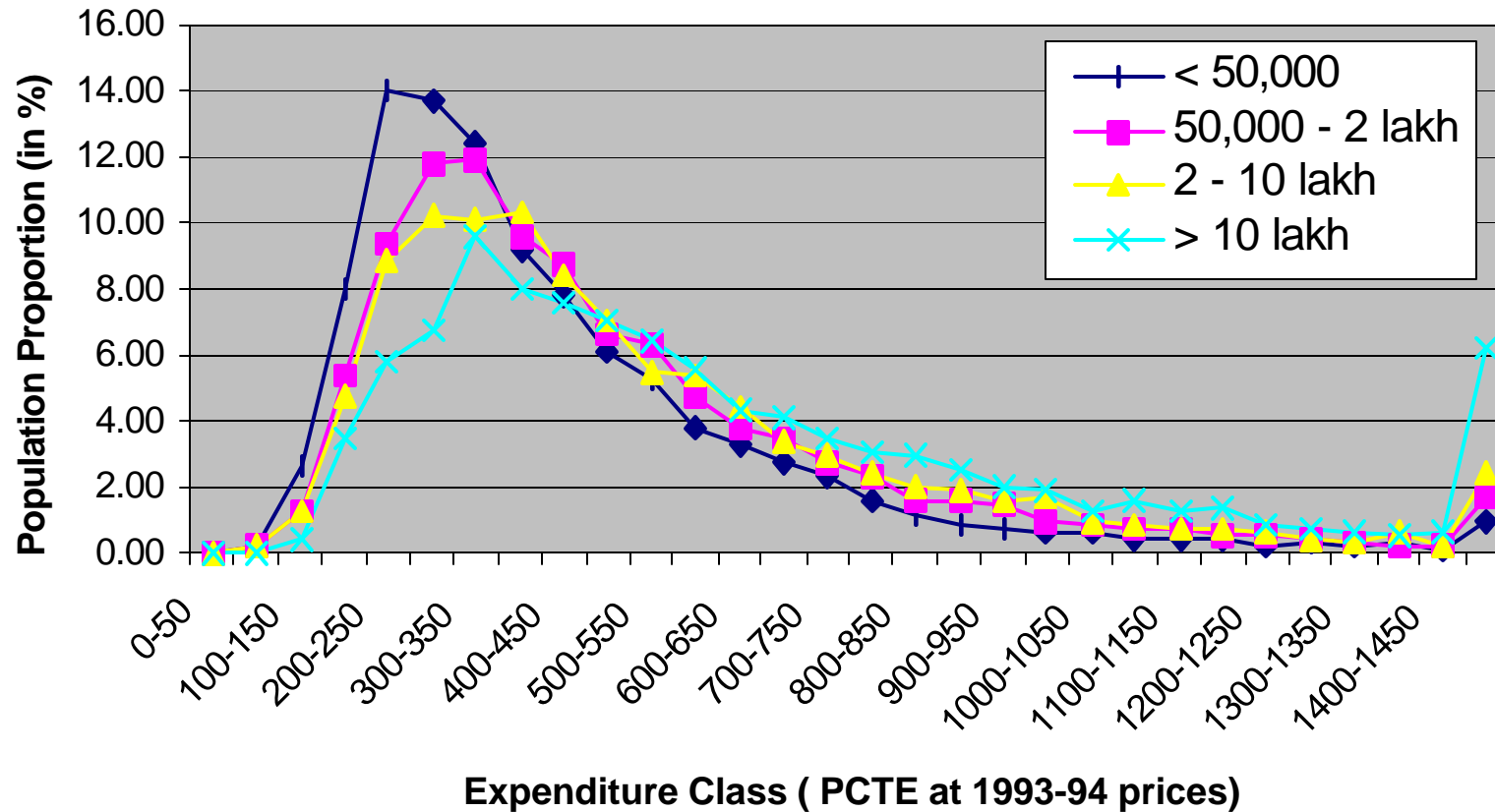
Average Calorie Requirement (relative to all India norm, 2095 Kcal)

Average Normative Calorie Requirement					
	S1	S2	S3	S4	Total
1993-94	2048	2044	2049	2067	2051
1999-2000	2037	2051	2053	2059	2049

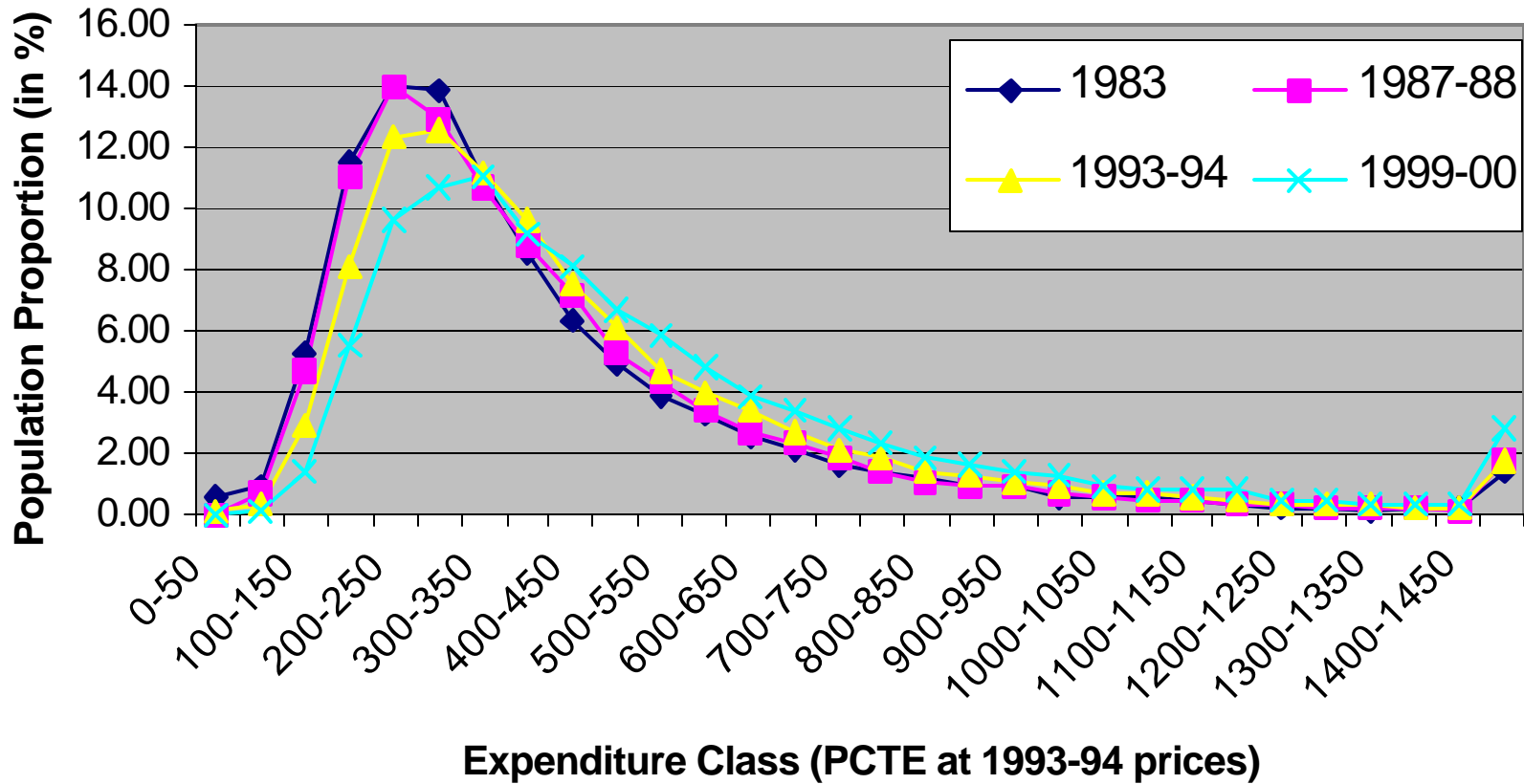
Level of Expenditure and population Distribution (1993-94)



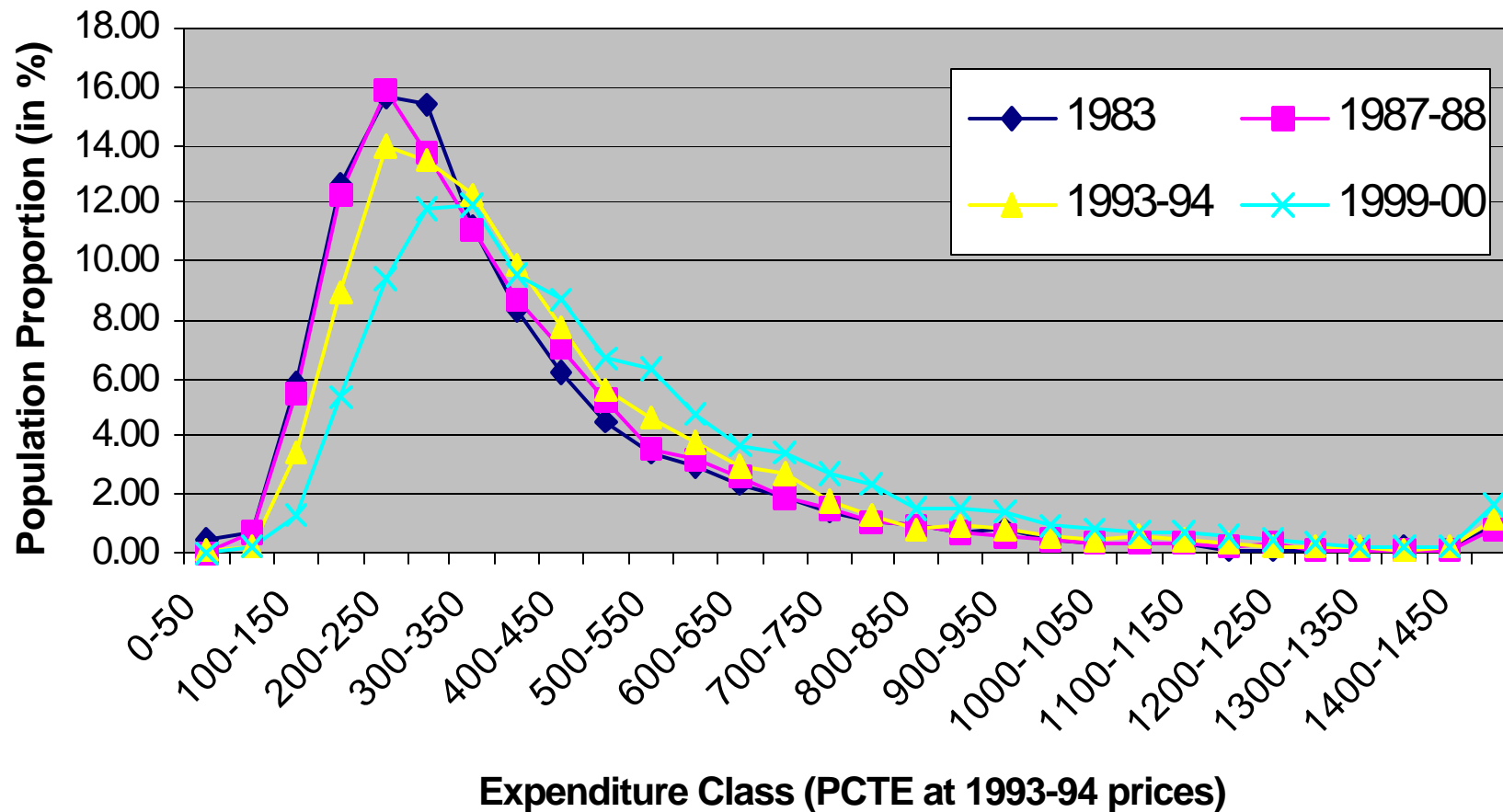
Level of Expenditure and population Distribution (1999-00)



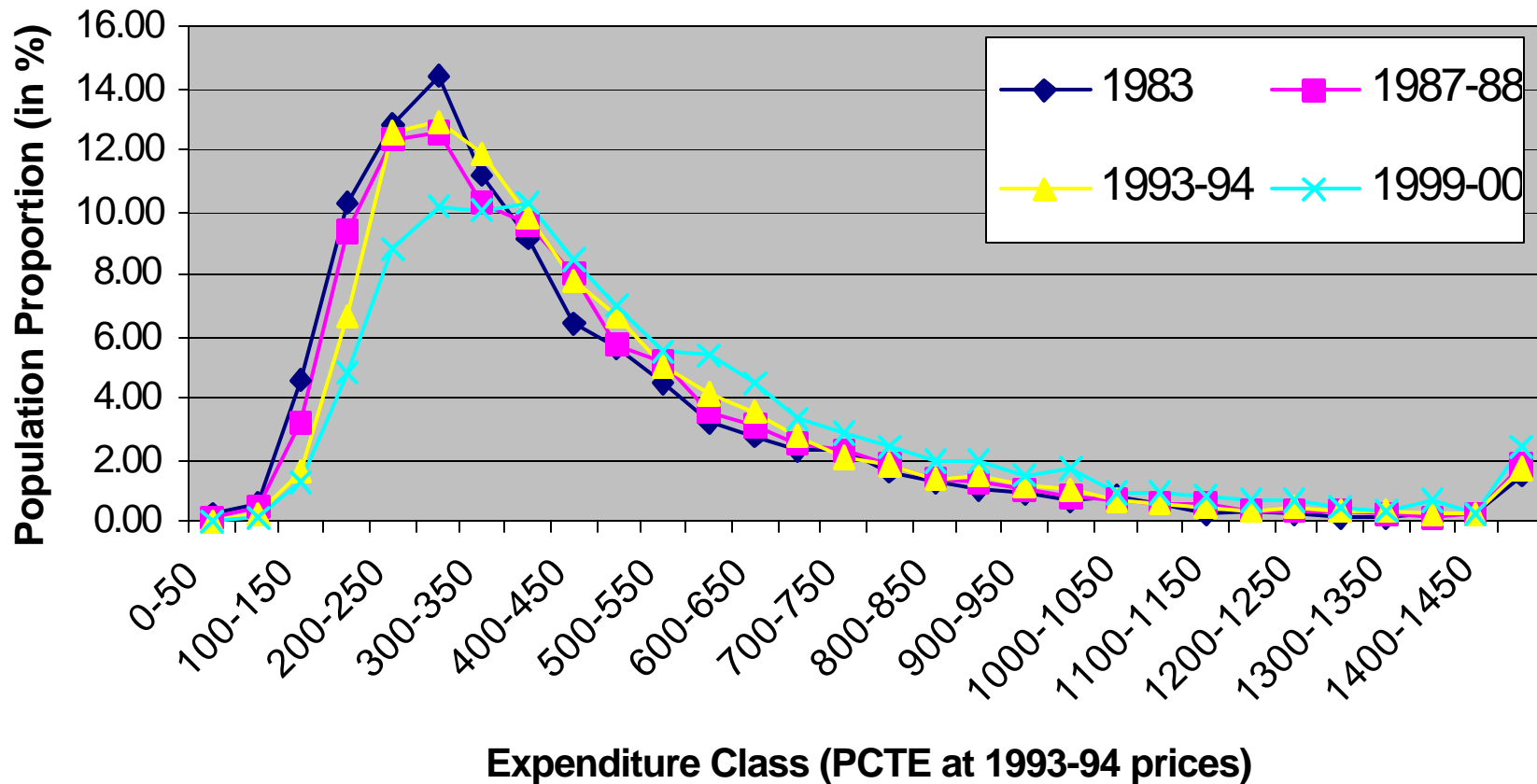
Shift in the Distribution (S1)



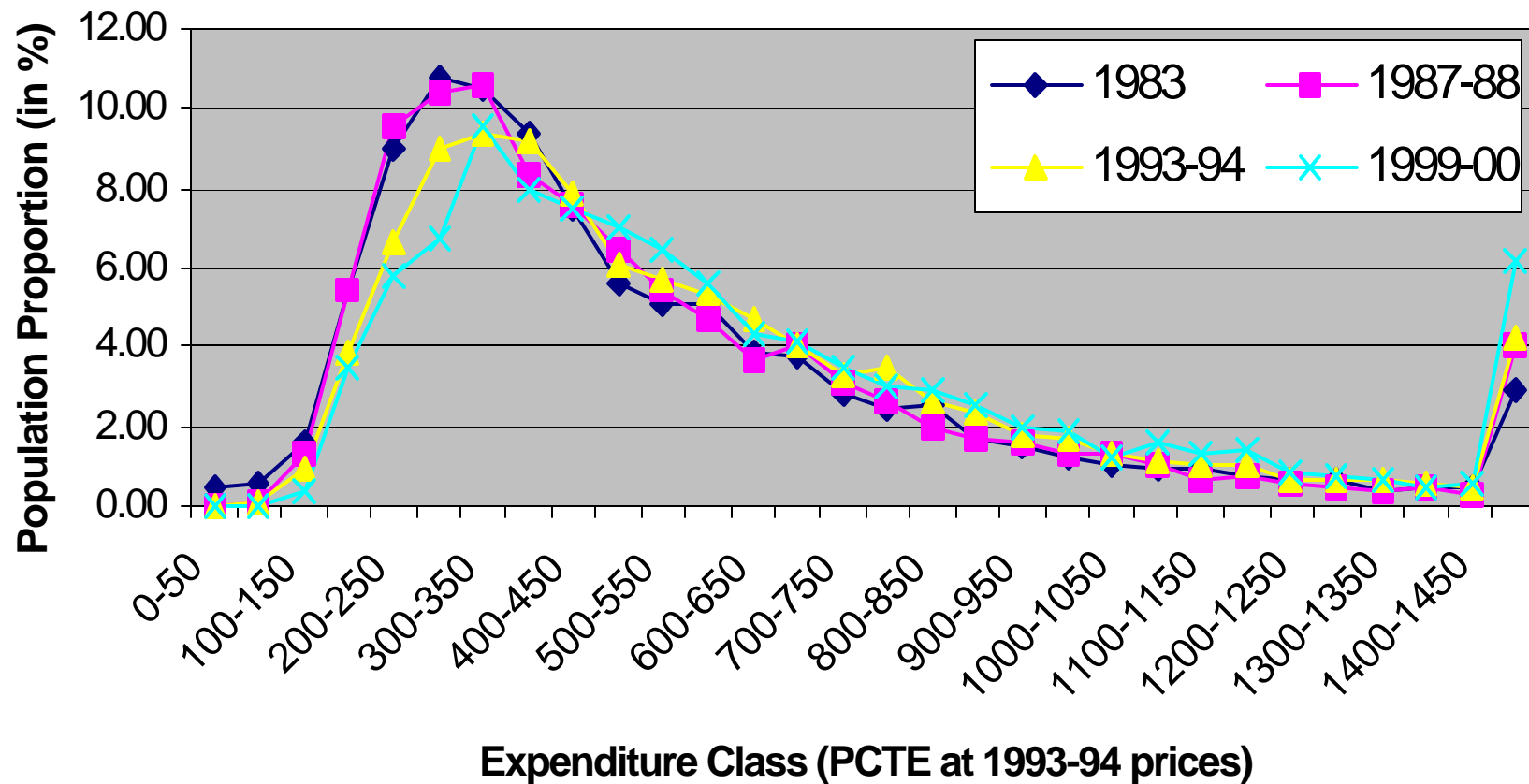
Shift in the Distribution (S2)



Shift in the Distribution (S3)



Shift in the Distribution (S4)



Poverty Incidence

Incidence of Income Poverty

	S1	S2	S3	S4	Total
1993-94	38.91	34.94	28.28	19.84	31.69
1999-2000	33.67	23.12	21.66	15.32	23.87
change (%)	-13.47	-33.83	-23.41	-22.78	-24.68

Incidence of Hunger Poverty

	S1	S2	S3	S4	Total
1993-94	45.16	50.08	50.20	53.13	49.08
1999-2000	54.96	54.84	53.73	60.59	56.17
change (%)	21.70	9.50	7.03	14.04	14.45

Findings and conclusions

- Significant differences in expenditure and earnings across city sizes
- Evidence of decline in normative food energy requirement
- Less variation in requirement compared to rural sector

Findings and conclusions (continued)

- Significant decline in consumption poverty during 1990s
- City size poverty closely related
- Smaller cities worse off, expenditure poverty incidence significantly higher in S1 than S4
- expenditure poverty and hunger poverty are diverging?

Findings and conclusions (continued)

- Explanations for
 - Inverse relationship between city size and expenditure poverty
 - Divergence between expenditure and hunger poverty
 - Data inadequate?
 - Income gains and nutrition improvement?

Thank you