

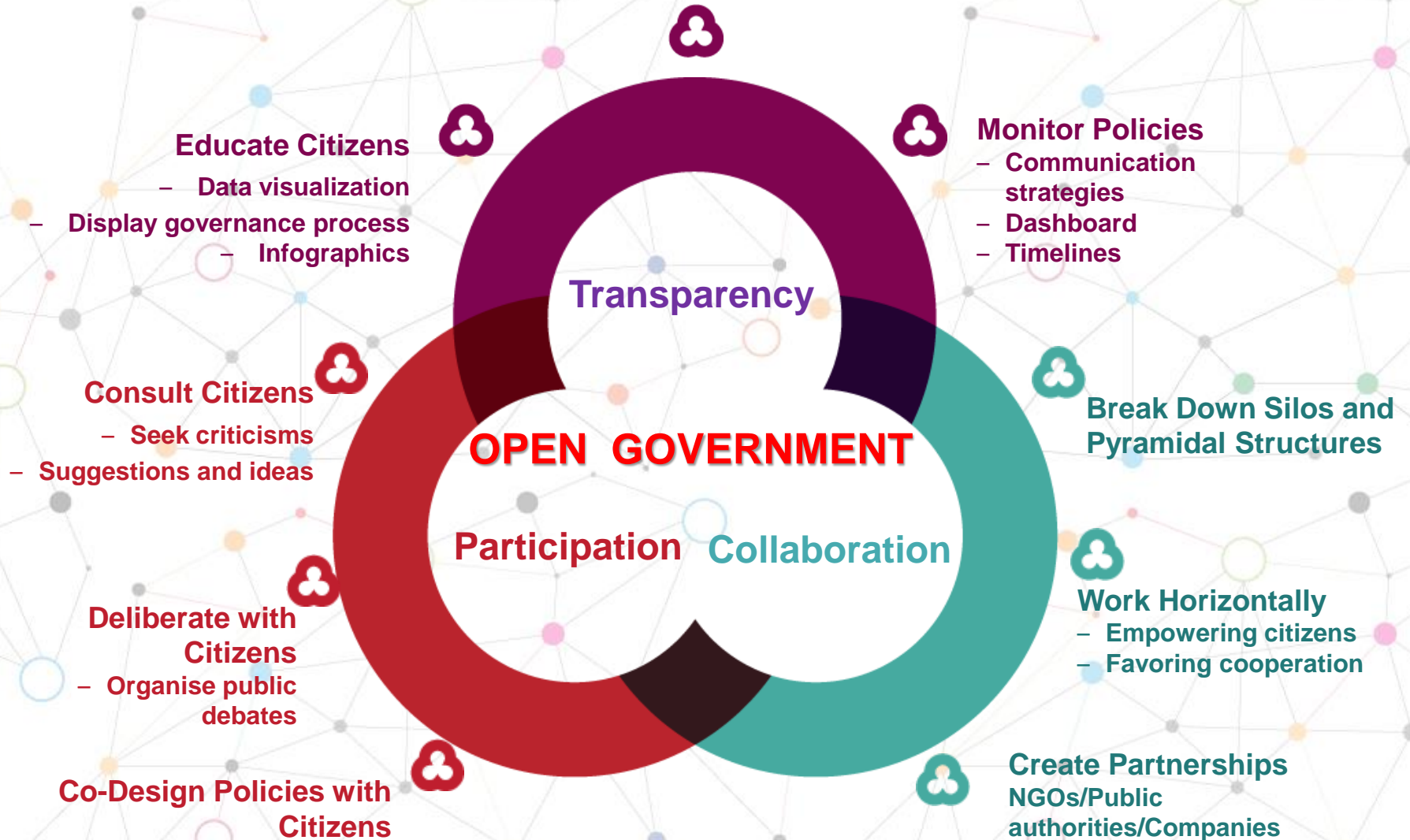
A background network diagram consisting of numerous interconnected nodes of various colors (blue, orange, green, pink, grey) and sizes, connected by thin grey lines, creating a complex web-like structure.

# Open Government Data

## *Collective Intelligence for Nation Building*

**J Satyanarayana**  
Advisor to GoAP  
(eGov, Electronics & IT)

# Open Government Data





# Open Government & Open Data

*Paradigm Shift in Governance*

*From provisioning G2C & G2B Services to*

*Setting up a Platform for  
Collaboration Innovation*

*Delivery of C2G & B2G Interactions*

# Open Government Data : Potential Impact

**Transparency**

**Accountability**

**Citizen Engagement**

**Collaboration**

**Better Governance**

**Better Decision making**

**Innovation**

# Why Open Government Data?

- Leads to evidence-based Planning of socio-economic development
- Huge Data Collected, Compiled & Owned by Govt
  - **Census, weather, market prices, Eco Indicators, price index, Demographic, Crime, survey, geo spatial data,..**
  - Often Little Used
  - Analyzed from one perspective
  - Collected using tax payer money
- Public Data gets into Public Domain
  - For **Innovative** use

# NDSAP: Key Stakeholders

- 1. Department of Science & Technology (DST) :**
  - coordination and monitoring of the policy
- 2. Department of Electronics & IT (DeitY)**
  - Issue detailed implementation guidelines
  - Set standards for data and metadata
- 3. National Informatics Centre**
  - Establish Open Government Data Platform ([data.gov.in](http://data.gov.in))
  - Help Ministries identify & publish datasets

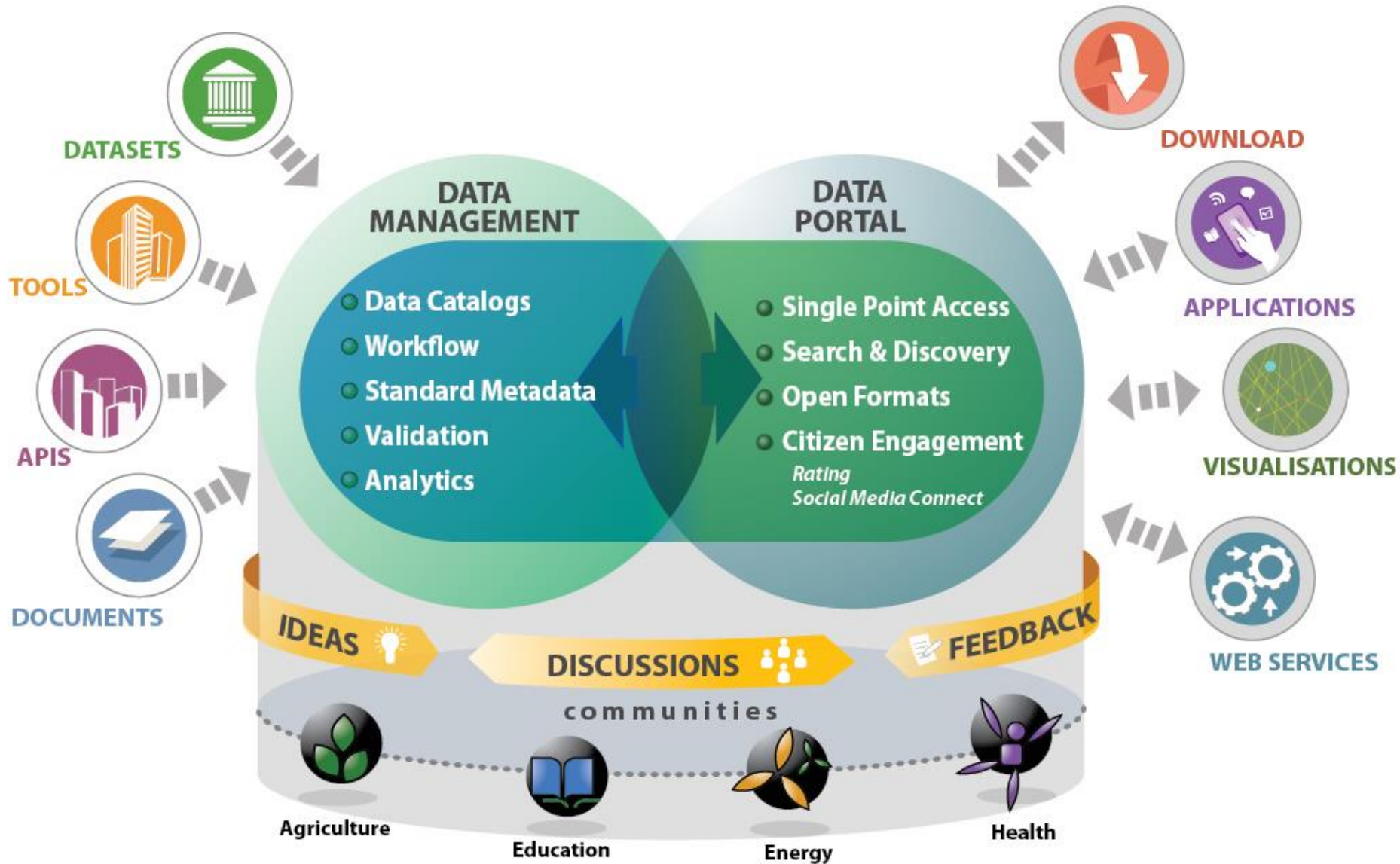
# NDSAP: Key Stakeholders

## 4. Ministry/ Departments/States.....

- **Nominate Nodal Officer (as Data Controller)**
- **Manage their Open Data Programme**
- **Define Negative List...**
- **Contribute datasets from Positive List**
  - **in Open Format**



# Open Government Data (OGD) Platform India



# Policy & Implementation Guidelines

available at [data.gov.in](https://data.gov.in)



**OPEN DATA  
POLICY OF INDIA  
(NDSAP)**



**OPEN DATA  
IMPLEMENTATION  
GUIDELINES**

# OGDP: Implementation Strategy

## Data Controllers

- *Senior Government officers*
- *To drive open data in respective State/depts/orgns*
- *95 officers nominated so far*

## Open Data Cell

- *Domain expert, data analyst, technologist*
- *Assists collation, conversion & publishing datasets on OGD Platform*

## Data Formats, Metadata Schema, Guidelines...

- *Data Quality, Accessibility, Standardization*

## Workshops, Seminars, Stakeholder Engagement

- *Sensitization, Capacity bldg.*
- *Citizen Engagement (online)*
- *Community Contests*

Search within 10,824 resources in 3,226 catalogs

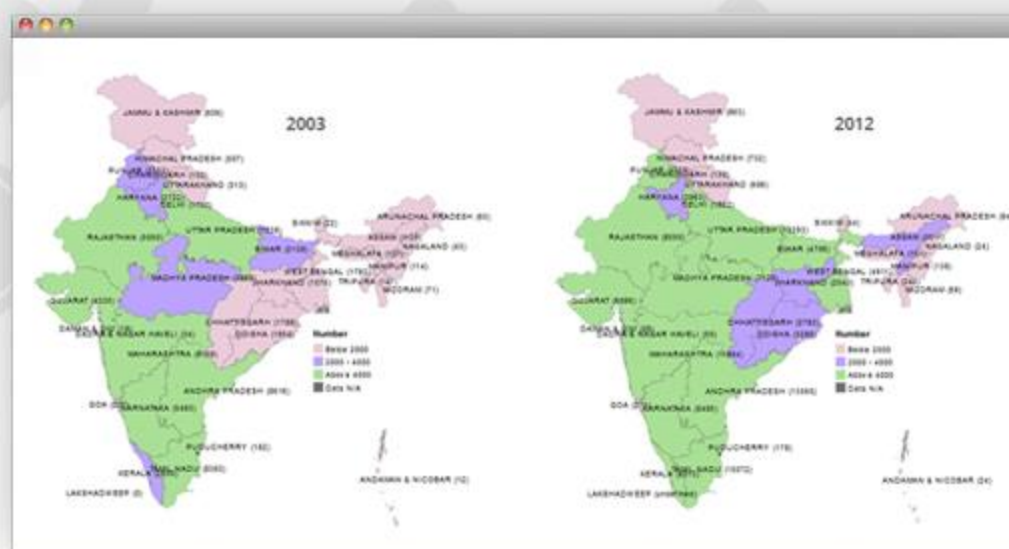
Search Catalogs

Search Everything

3<sup>rd</sup> September 2014

# VISUALIZATION OF THE DAY

State/UT-wise fatal road accidents during 2003-2012



**10,824** RESOURCES IN **3,226** CATALOGS, **258** VISUALIZATIONS BY **71** DEPARTMENTS ARE **1.62 M** TIMES VIEWED, **642,484** TIMES DOWNLOADED BY **42,485** REGISTERED USERS

Announcements

Catalogs

Trends

» Nomination Deadline for Web Ratna Awards Extended to August 31, 2014

NOMINATED DATA CONTROLLERS

# ↑ / Catalogs

Filter by Ministry/Department >

Filter by State/Department >

Filter by Sector >

Filter by File Format >

Filter by Resource Category >

Filter by Group >

Filter by Frequency >

Filter by Asset Jurisdiction >

Filter by Keywords >

Filter by Visualization >

Filter by API >

☰ Displaying 1 - 20 of 3219 Catalog(s)

Reset All

Share Widget

Search

Last Updated

Desc

20

Apply

Reset

### All India Consumer Price Index (Rural/Urban)

Ministry of Statistics and Programme Implementation

Consumer Price Indices (CPI) measure changes over time in general level of prices of goods and services that households acquire for the purpose of consumption. CPI numbers are widely used as a macroeconomic indicator of inflation, as a tool by governments and central banks for inflation targeting and for monitoring price stability, and as deflators in the national accounts. CPI is also used for indexing dearness allowance to employees for increase in prices. CPI is therefore considered as one of the most important economic indicators. For construction of CPI numbers, two requisite components are weighting diagrams (consumption patterns) and price data collected at regular intervals. The data refers to group wise all India Consumer Price Index for Rural & Urban with base year 2010. The dataset is published by Central Statistical Office and released on 12th of every month.

Keywords: All India Index, Commodity, Consumer Price Index, CPI, Group Index

9981 Views 8,702 Downloads



14 x EXCEL

3 x CSV

Last Updated 1 day 16 hours ago

### State Level Consumer Price Index (Rural/Urban)

Ministry of Statistics and Programme Implementation

Consumer Price Indices (CPI) measure changes over time in general level of prices of goods and services that households acquire for the purpose of consumption. CPI numbers are widely used as a

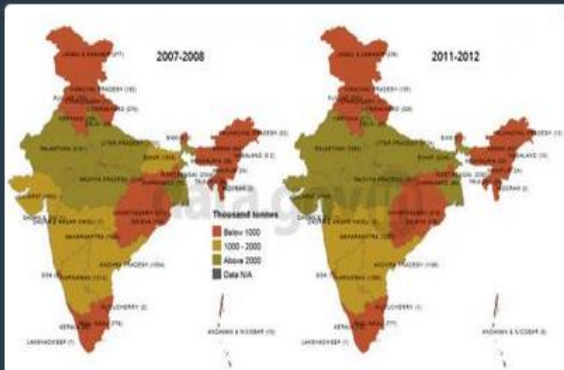
Suggest a Dataset

## Central Publication Metrics

| Ministry/Department                                      | Resource (Dataset) | Resource (App) | Total Resources | Total Catalogs |
|--|--------------------|----------------|-----------------|----------------|
| <b>Ministry of Home Affairs</b>                          | 2809               | 0              | 2809            | 197            |
| Department of Home                                       | 2675               | 0              | 2675            | 64             |
| Registrar General and Census Commissioner, India         | 2665               | 0              | 2665            | 61             |
| Department of States                                     | 117                | 0              | 117             | 116            |
| National Crime Records Bureau (NCRB)                     | 117                | 0              | 117             | 116            |
| <b>Ministry of Agriculture</b>                           | 2078               | 0              | 2078            | 348            |
| Department of Agriculture and Co-operation               | 2022               | 0              | 2022            | 312            |
| Directorate of Marketing and Inspection (DMI)            | 2017               | 0              | 2017            | 310            |
| Directorate of Economics and Statistics (DES)            | 5                  | 0              | 5               | 2              |
| Department of Animal Husbandry, Dairying and Fisheries   | 51                 | 0              | 51              | 31             |
| Department of Agricultural Research and Education (DARE) | 5                  | 0              | 5               | 5              |
| Indian Council of Agricultural Research (ICAR)           | 5                  | 0              | 5               | 5              |
| <b>Planning Commission</b>                               | 1207               | 0              | 1207            | 745            |
| Unique Identification Authority of India (UIDAI)         | 4                  | 0              | 4               | 4              |
| <b>Ministry of Water Resources</b>                       | 1060               | 0              | 1060            | 557            |

Suggest a Dataset

Filters



Estimates of Cow Milk Production across India during 2007-08 to 2011-12

Source: Department of Animal Husbandry, Dairying and Fisheries, Ministry of Agriculture



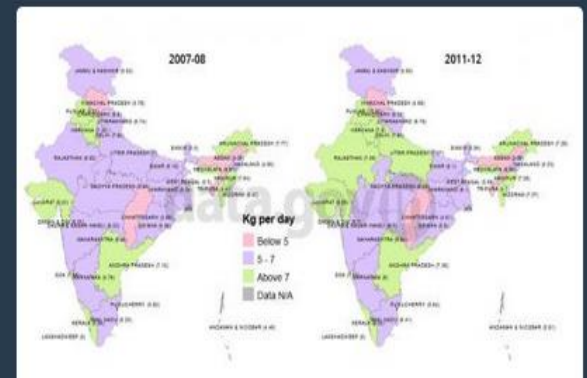
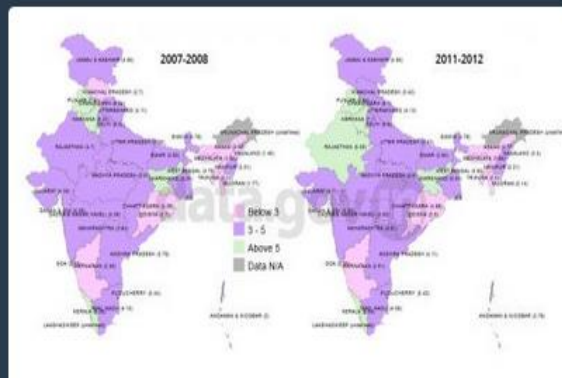
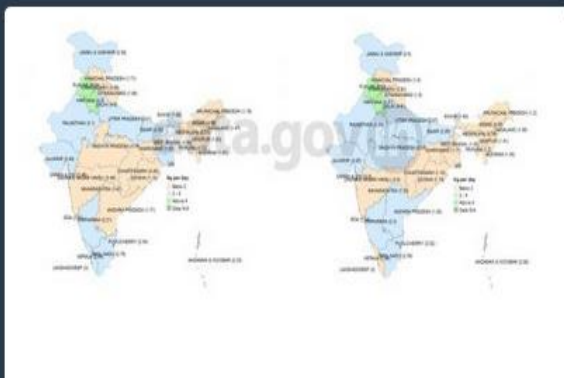
Estimates of Buffalo Milk Production across India during 2007-08 to 2011-12

Source: Department of Animal Husbandry, Dairying and Fisheries, Ministry of Agriculture

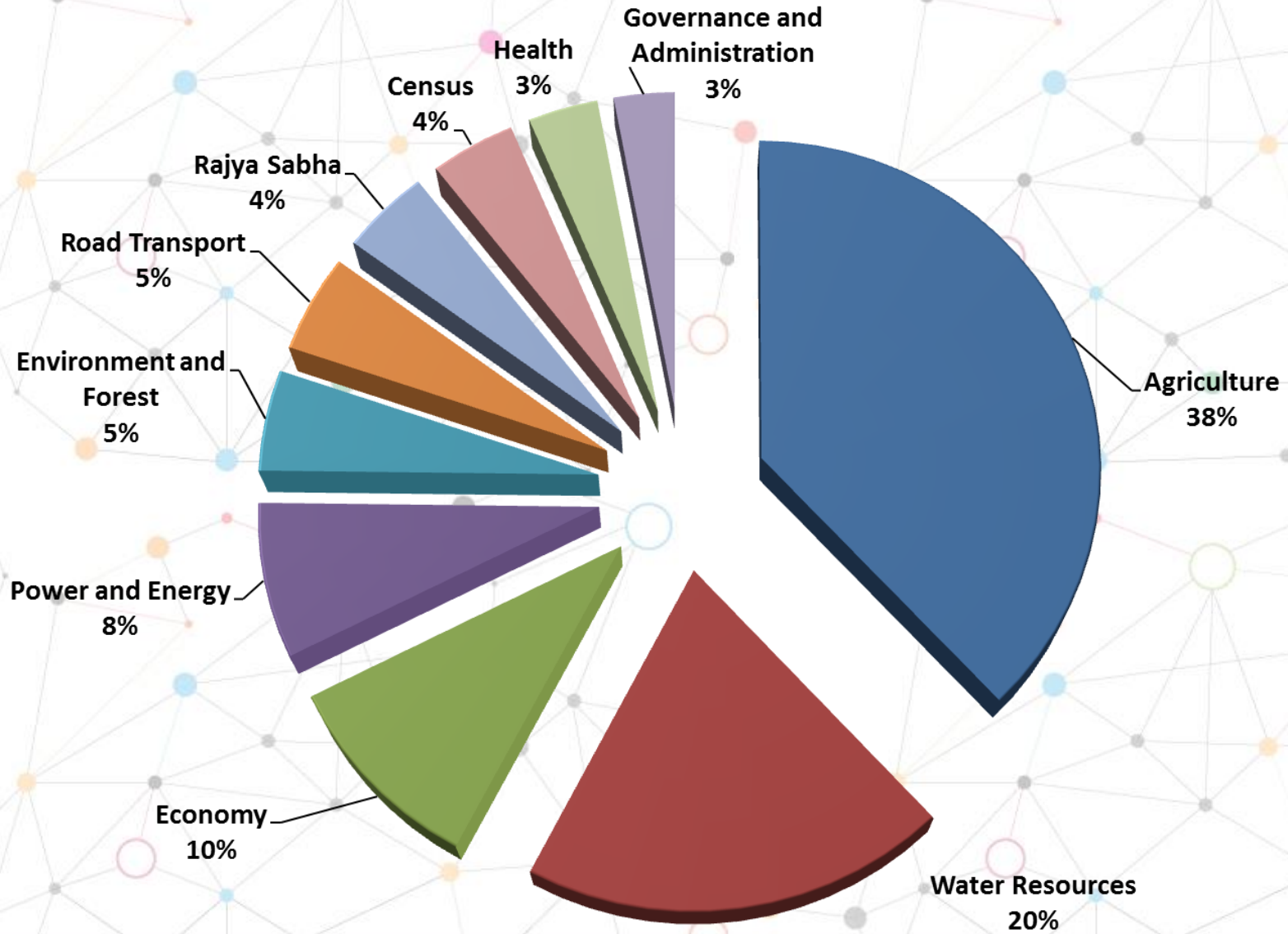


Railway Density of India During 2002-2012

Source: Planning Commission



# OGDP: Resources from Top Ten Sectors





# Engage, to Drive Innovation

Community  
Engagement

Academia Engagement

Industry Engagement

# OGDP: Community Engagement

12<sup>th</sup> Plan Hackathon

In Pursuit of an Idea

#OpenDataApps Challenge

CMA Hackathon

Code For Honor



# Open Data- *Way Forward*

- Enhance **Quality** of Data
  - Latest, Near-real-time
  - Relevant
- Provide **Demand-driven** Data
  - Majority downloads from Health, Agriculture, Education
- Establish **Automated Systems** for Data publication
- Promote **Entrepreneurship** around Open Dataa

A background network diagram consisting of numerous interconnected nodes and edges. The nodes are represented by small circles in various colors including blue, orange, green, pink, and grey. The edges are thin grey lines connecting the nodes, forming a complex web-like structure.

# Thank You

[j.satya@ap.gov.in](mailto:j.satya@ap.gov.in)